



**ELECTRONIC COPY**

LG637481948  
Report verification at igi.org



June 14, 2024

IGI Report Number **LG637481948**

Description **LABORATORY GROWN DIAMOND**

Shape and Cutting Style **ROUND BRILLIANT**

Measurements **7.77 - 7.82 X 4.85 MM**

**GRADING RESULTS**

Carat Weight **1.83 CARAT**

Color Grade **E**

Clarity Grade **SI 1**

Cut Grade **IDEAL**

June 14, 2024  
IGI Report Number **LG637481948**  
Description **LABORATORY GROWN DIAMOND**  
Shape and Cutting Style **ROUND BRILLIANT**  
Measurements **7.77 - 7.82 X 4.85 MM**

**GRADING RESULTS**

Carat Weight **1.83 CARAT**

Color Grade **E**

Clarity Grade **SI 1**

Cut Grade **IDEAL**

**ADDITIONAL GRADING INFORMATION**

Polish **EXCELLENT**

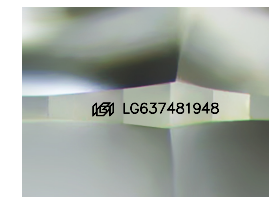
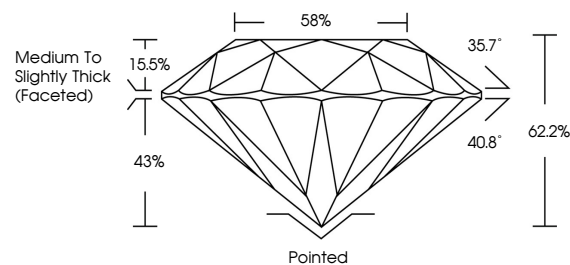
Symmetry **EXCELLENT**

Fluorescence **NONE**

Inscription(s) **IGI LG637481948**

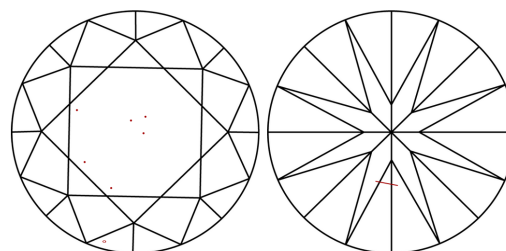
Comments: This Laboratory Grown Diamond was created by Chemical Vapor Deposition (CVD) growth process. Type IIa

**PROPORTIONS**



Sample Image Used

**CLARITY CHARACTERISTICS**



**KEY TO SYMBOLS**

Red symbols indicate internal characteristics.  
Green symbols indicate external characteristics.

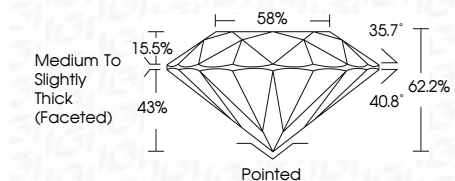
**COLOR**

D E F G H I J Faint Very Light Light

**CLARITY**

IF VS<sup>1-2</sup> VS<sup>1-2</sup> SI<sup>1-2</sup> I<sup>1-3</sup>

Internally Flawless Very Very Slightly Included Very Slightly Included Slightly Included Included



**ADDITIONAL GRADING INFORMATION**

Polish **EXCELLENT**

Symmetry **EXCELLENT**

Fluorescence **NONE**

Inscription(s) **IGI LG637481948**

Comments: This Laboratory Grown Diamond was created by Chemical Vapor Deposition (CVD) growth process. Type IIa



June 14, 2024  
IGI Report No LG637481948  
**ROUND BRILLIANT**  
1.83 CARAT  
Color Grade **E**  
Clarity Grade **SI 1**  
Depth **62.2%**  
Table **15.5%**  
Girdle **Medium To Slightly Thick (Faceted)**  
Culet **Pointed**  
Polish **EXCELLENT**  
Symmetry **EXCELLENT**  
Fluorescence **NONE**  
Inscription(s) **IGI LG637481948**  
Comments: This Laboratory Grown Diamond was created by Chemical Vapor Deposition (CVD) growth process. Type IIa