



ELECTRONIC COPY

LABORATORY GROWN DIAMOND REPORT

June 5, 2024  
IGI Report Number LG637483135  
Description LABORATORY GROWN DIAMOND  
Shape and Cutting Style PRINCESS CUT  
Measurements 7.48 X 7.28 X 5.34 MM

GRADING RESULTS

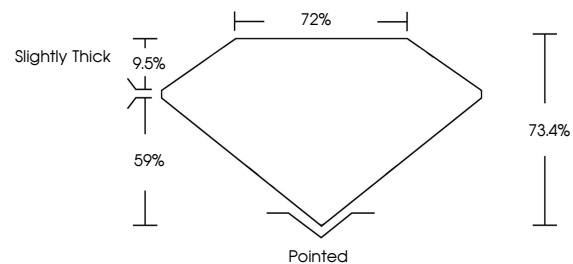
Carat Weight 2.50 CARATS  
Color Grade E  
Clarity Grade VS 2

ADDITIONAL GRADING INFORMATION

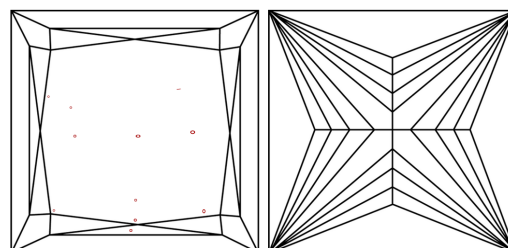
Polish EXCELLENT  
Symmetry EXCELLENT  
Fluorescence NONE  
Inscription(s) IGI LG637483135

Comments: This Laboratory Grown Diamond was created by Chemical Vapor Deposition (CVD) growth process. Type IIa

PROPORTIONS

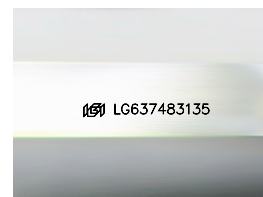


CLARITY CHARACTERISTICS



KEY TO SYMBOLS

Red symbols indicate internal characteristics.  
Green symbols indicate external characteristics.



Sample Image Used

COLOR

D E F G H I J Faint Very Light Light

CLARITY

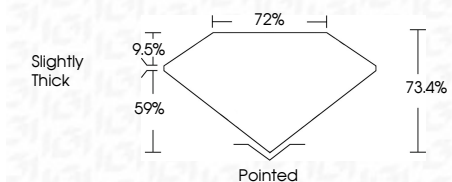
IF VS 1-2 VS 1-2 SI 1-2 I 1-3  
Internally Flawless Very Very Slightly Included Very Slightly Included Slightly Included Included



June 5, 2024  
IGI Report Number LG637483135  
Description LABORATORY GROWN DIAMOND  
Shape and Cutting Style PRINCESS CUT  
Measurements 7.48 X 7.28 X 5.34 MM

GRADING RESULTS

Carat Weight 2.50 CARATS  
Color Grade E  
Clarity Grade VS 2



ADDITIONAL GRADING INFORMATION

Polish EXCELLENT  
Symmetry EXCELLENT  
Fluorescence NONE  
Inscription(s) IGI LG637483135  
Comments: This Laboratory Grown Diamond was created by Chemical Vapor Deposition (CVD) growth process. Type IIa



IGI



June 5, 2024  
IGI Report No LG637483135  
PRINCESS CUT  
7.48 X 7.28 X 5.34 MM  
2.50 CARATS  
Color Grade E  
Clarity Grade VS 2  
Depth 73.4%  
Table 72%  
Girdle Slightly Thick  
Culet Pointed  
Polish EXCELLENT  
Symmetry EXCELLENT  
Fluorescence NONE  
Inscription(s) IGI LG637483135  
Comments: This Laboratory Grown Diamond was created by Chemical Vapor Deposition (CVD) growth process. Type IIa