



ELECTRONIC COPY

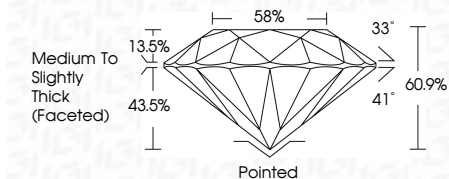
LG637483351
Report verification at igi.org



June 5, 2024
IGI Report Number: LG637483351
Description: LABORATORY GROWN DIAMOND
Shape and Cutting Style: ROUND BRILLIANT
Measurements: 7.48 - 7.51 X 4.57 MM

GRADING RESULTS

Carat Weight: 1.58 CARAT
Color Grade: F
Clarity Grade: VS 1
Cut Grade: IDEAL



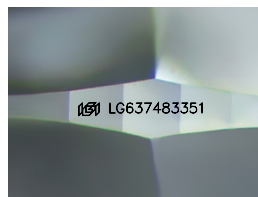
ADDITIONAL GRADING INFORMATION

Polish: EXCELLENT
Symmetry: EXCELLENT
Fluorescence: NONE
Inscription(s): IGI LG637483351
Comments: This Laboratory Grown Diamond was created by Chemical Vapor Deposition (CVD) growth process. Type IIa



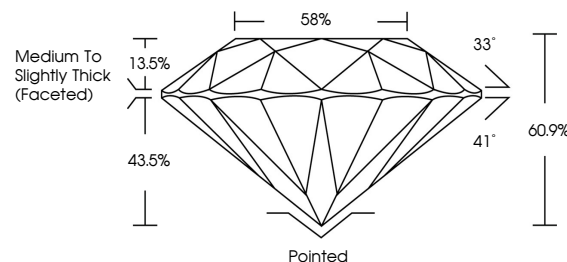
IGI

June 5, 2024
IGI Report No LG637483351
ROUND BRILLIANT
7.48 - 7.51 X 4.57 MM
1.58 CARAT
Color Grade: F
Clarity Grade: VS 1
Depth: 60.9%
Table: 58%
Girdle: Medium To Slightly Thick (Faceted)
Culet: Pointed
Polish: EXCELLENT
Symmetry: EXCELLENT
Fluorescence: NONE
Inscriptions: IGI LG637483351
Comments: This Laboratory Grown Diamond was created by Chemical Vapor Deposition (CVD) growth process. Type IIa

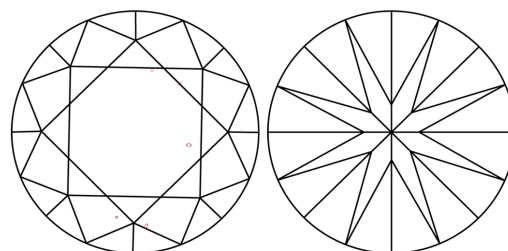


Sample Image Used

PROPORTIONS



CLARITY CHARACTERISTICS



KEY TO SYMBOLS

Red symbols indicate internal characteristics.
Green symbols indicate external characteristics.

COLOR

D E F G H I J Faint Very Light Light

CLARITY

IF VS 1-2 VS 1-2 SI 1-2 I 1-3
Internally Flawless Very Very Slightly Included Very Slightly Included Slightly Included Included

