



**ELECTRONIC COPY**

## LABORATORY GROWN DIAMOND REPORT

June 5, 2024	
IGI Report Number	LG637483993
Description	LABORATORY GROWN DIAMOND
Shape and Cutting Style	CUT CORNERED RECTANGULAR MODIFIED BRILLIANT
Measurements	7.71 X 5.50 X 3.68 MM

## GRADING RESULTS

Carat Weight	1.33 CARAT
Color Grade	G
Clarity Grade	VS2

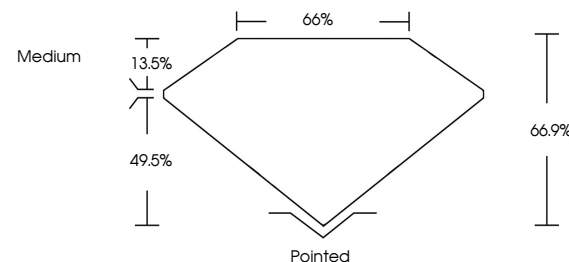
### ADDITIONAL GRADING INFORMATION

Polish	EXCELLENT
Symmetry	EXCELLENT
Fluorescence	NONE
Inscription(s)	 LG637483993

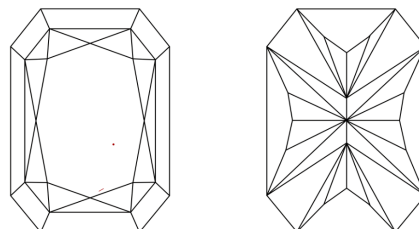
Comments: This Laboratory Grown Diamond was created by Chemical Vapor Deposition (CVD) growth process.  
Type IIa

LG637483993  
Report verification at [igi.org](https://www.igi.org)

## PROPORTIONS

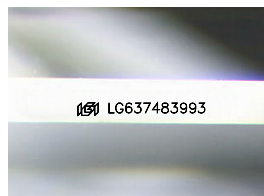


## CLARITY CHARACTERISTICS



## KEY TO SYMBOLS

Red symbols indicate internal characteristics.  
Green symbols indicate external characteristics.



Sample Image Used

## COLOR

D E F G H I J Faint Very Light Light

## CLARITY

IF	VVS <sup>1-2</sup>	VS <sup>1-2</sup>	SI <sup>1-2</sup>	I <sup>1-3</sup>
Internally Flawless	Very Very Slightly Included	Very Slightly Included	Slightly Included	Included



© IGI 2020, International Gemological Institute

FD - 10 20

**www.igi.org**

DIAMOND REPORT

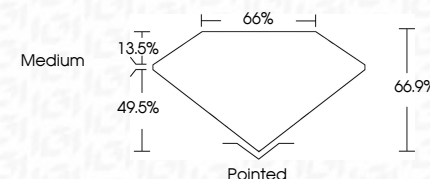


June 5, 2024	
IGI Report Number	LG637483993
Description	LABORATORY GROWN DIAMOND
Shape and Cutting Style	CUT CORNERED RECTANGULAR MODIFIED BRILLIANT

Measurements 7.71 X 5.50 X 3.68 MM

## GRADING RESULTS

Carat Weight	1.33 CARAT
Color Grade	G
Clarity Grade	VVS2



### ADDITIONAL GRADING INFORMATION

Polish	EXCELLENT
Symmetry	EXCELLENT
Fluorescence	NONE
Inscription(s)	15 LG-637483993

Comments: This Laboratory Grown Diamond was created by Chemical Vapor Deposition (CVD) growth process.  
Type IIa



June 5, 2024  
 GI Report No  
 CUT CORNERED  
 7.71 X 5.60 X 3.50  
 Carat Weight  
 Color Grade  
 Clarity Grade  
 Depth  
 Table  
 Grade  
 Culet  
 Polish  
 Symmetry  
 Fluorescence  
 Inscription(s)  
 Comments:  
 This Laboratory  
 created by C  
 (CVD) growth  
 type IIa