



**ELECTRONIC COPY**

LG638403461  
Report verification at igi.org



June 10, 2024

IGI Report Number **LG638403461**

Description **LABORATORY GROWN DIAMOND**

Shape and Cutting Style **ROUND BRILLIANT**

Measurements **11.70 - 11.78 X 7.10 MM**

**GRADING RESULTS**

Carat Weight **6.06 CARATS**

Color Grade **E**

Clarity Grade **VVS 1**

Cut Grade **IDEAL**

June 10, 2024  
IGI Report Number **LG638403461**  
Description **LABORATORY GROWN DIAMOND**  
Shape and Cutting Style **ROUND BRILLIANT**  
Measurements **11.70 - 11.78 X 7.10 MM**

**GRADING RESULTS**

Carat Weight **6.06 CARATS**

Color Grade **E**

Clarity Grade **VVS 1**

Cut Grade **IDEAL**

**ADDITIONAL GRADING INFORMATION**

Polish **EXCELLENT**

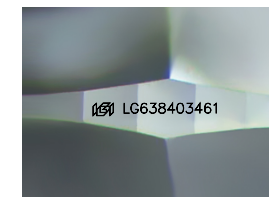
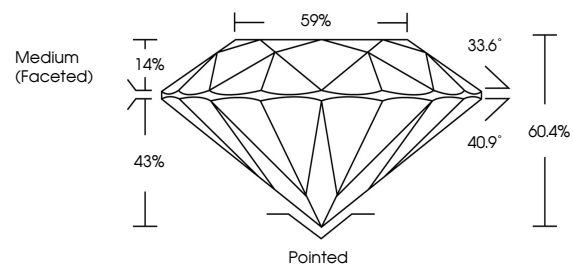
Symmetry **EXCELLENT**

Fluorescence **NONE**

Inscription(s) **IGI LG638403461**

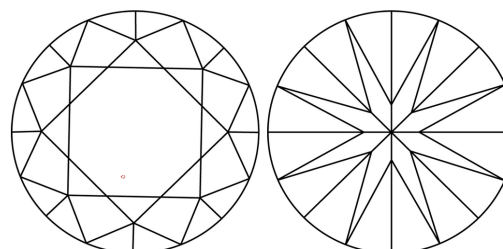
Comments: This Laboratory Grown Diamond was created by Chemical Vapor Deposition (CVD) growth process.  
Type IIa

**PROPORTIONS**



Sample Image Used

**CLARITY CHARACTERISTICS**



**KEY TO SYMBOLS**

Red symbols indicate internal characteristics.  
Green symbols indicate external characteristics.

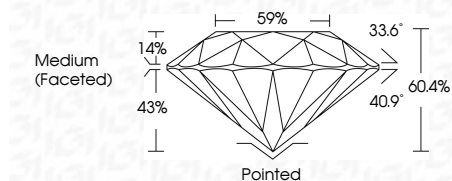
**COLOR**

D E F G H I J Faint Very Light Light

**CLARITY**

IF VS<sup>1-2</sup> VS<sup>1-2</sup> SI<sup>1-2</sup> I<sup>1-3</sup>

Internally Flawless Very Very Slightly Included Very Slightly Included Slightly Included Included



**ADDITIONAL GRADING INFORMATION**

Polish **EXCELLENT**

Symmetry **EXCELLENT**

Fluorescence **NONE**

Inscription(s) **IGI LG638403461**

Comments: This Laboratory Grown Diamond was created by Chemical Vapor Deposition (CVD) growth process.  
Type IIa



**IGI**



|  |                           |                         |             |               |           |       |       |                  |         |           |           |              |                 |
|--|---------------------------|-------------------------|-------------|---------------|-----------|-------|-------|------------------|---------|-----------|-----------|--------------|-----------------|
| June 10, 2024  | IGI Report No LG638403461 | 6.06 CARATS             | E           | VVS 1         | IDEAL     | 60.4% | 59%   | Medium (Faceted) | Pointed | EXCELLENT | EXCELLENT | NONE         | IGI LG638403461 |
| IGI Report No LG638403461  | ROUND BRILLIANT           | 11.70 - 11.78 X 7.10 MM | Color Grade | Clarity Grade | Cut Grade | Depth | Table | Girdle           | Culet   | Polish    | Symmetry  | Fluorescence | Inscription(s)  |
| <p>Comments: This Laboratory Grown Diamond was created by Chemical Vapor Deposition (CVD) growth process.<br/>Type IIa</p> |                           |                         |             |               |           |       |       |                  |         |           |           |              |                 |