



ELECTRONIC COPY

LG638403855
Report verification at igi.org



June 10, 2024
IGI Report Number LG638403855
Description LABORATORY GROWN DIAMOND
Shape and Cutting Style ROUND BRILLIANT
Measurements 8.46 - 8.49 X 5.13 MM
GRADING RESULTS
Carat Weight 2.26 CARATS
Color Grade G
Clarity Grade VVS 2
Cut Grade IDEAL

June 10, 2024
IGI Report Number LG638403855
Description LABORATORY GROWN DIAMOND
Shape and Cutting Style ROUND BRILLIANT
Measurements 8.46 - 8.49 X 5.13 MM

GRADING RESULTS

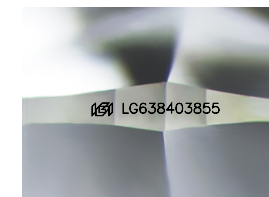
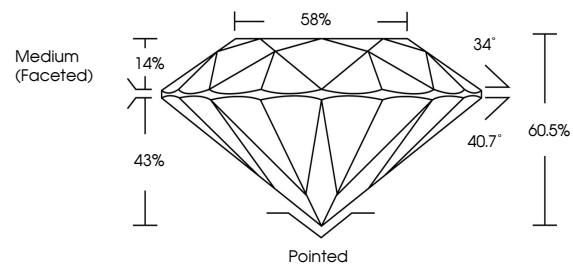
Carat Weight 2.26 CARATS
Color Grade G
Clarity Grade VVS 2
Cut Grade IDEAL

ADDITIONAL GRADING INFORMATION

Polish EXCELLENT
Symmetry EXCELLENT
Fluorescence NONE
Inscription(s) IGI LG638403855

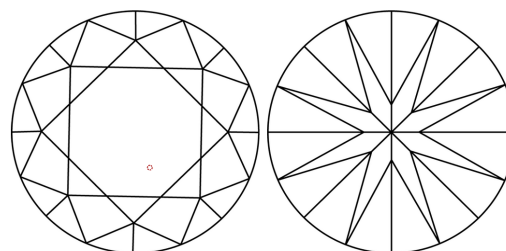
Comments: This Laboratory Grown Diamond was created by Chemical Vapor Deposition (CVD) growth process. Type IIa

PROPORTIONS



Sample Image Used

CLARITY CHARACTERISTICS



KEY TO SYMBOLS

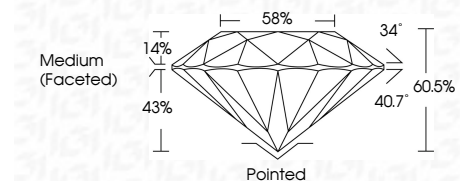
Red symbols indicate internal characteristics.
Green symbols indicate external characteristics.

COLOR

D E F G H I J Faint Very Light Light

CLARITY

IF VVS 1-2 VS 1-2 SI 1-2 I 1-3
Internally Flawless Very Very Slightly Included Very Slightly Included Slightly Included Included



ADDITIONAL GRADING INFORMATION

Polish EXCELLENT
Symmetry EXCELLENT
Fluorescence NONE
Inscription(s) IGI LG638403855
Comments: This Laboratory Grown Diamond was created by Chemical Vapor Deposition (CVD) growth process. Type IIa



IGI



June 10, 2024
IGI Report No LG638403855
ROUND BRILLIANT
8.46 - 8.49 X 5.13 MM
2.26 CARATS
Color Grade G
Clarity Grade VVS 2
Cut Grade IDEAL
Depth 60.5%
Table 58%
Medium (Faceted)
Gulet Pointed
Polish EXCELLENT
Symmetry EXCELLENT
Fluorescence NONE
Inscription(s) IGI LG638403855
Comments: This Laboratory Grown Diamond was created by Chemical Vapor Deposition (CVD) growth process. Type IIa