



ELECTRONIC COPY

LABORATORY GROWN DIAMOND REPORT

June 24, 2024  
IGI Report Number LG638425327  
Description LABORATORY GROWN DIAMOND  
Shape and Cutting Style CUT CORNERED RECTANGULAR MODIFIED BRILLIANT  
Measurements 7.31 X 5.06 X 3.42 MM

GRADING RESULTS

Carat Weight 1.07 CARAT  
Color Grade E  
Clarity Grade VVS 2

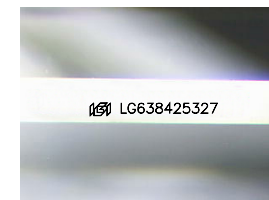
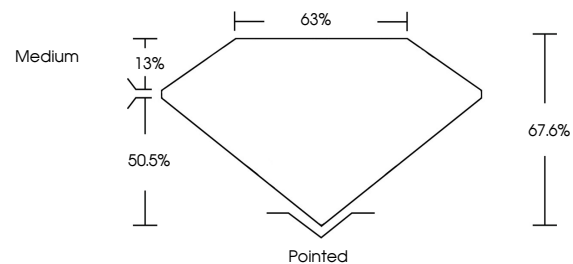
ADDITIONAL GRADING INFORMATION

Polish EXCELLENT  
Symmetry EXCELLENT  
Fluorescence NONE

Inscription(s) IGI LG638425327

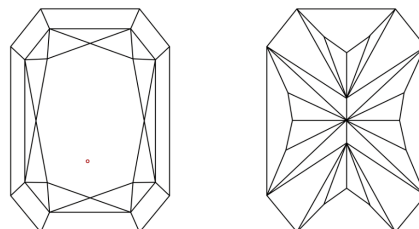
Comments: This Laboratory Grown Diamond was created by Chemical Vapor Deposition (CVD) growth process.  
Type IIa

PROPORTIONS



Sample Image Used

CLARITY CHARACTERISTICS



KEY TO SYMBOLS

Red symbols indicate internal characteristics.  
Green symbols indicate external characteristics.

COLOR

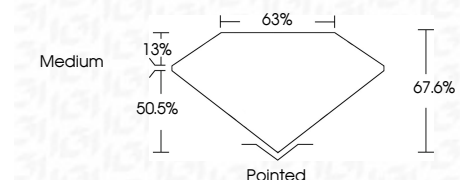
D E F G H I J Faint Very Light Light

CLARITY

IF VS 1-2 VS 1-2 SI 1-2 I 1-3  
Internally Flawless Very Very Slightly Included Very Slightly Included Slightly Included Included



June 24, 2024  
IGI Report Number LG638425327  
Description LABORATORY GROWN DIAMOND  
Shape and Cutting Style CUT CORNERED RECTANGULAR MODIFIED BRILLIANT  
Measurements 7.31 X 5.06 X 3.42 MM  
GRADING RESULTS  
Carat Weight 1.07 CARAT  
Color Grade E  
Clarity Grade VVS 2



ADDITIONAL GRADING INFORMATION

Polish EXCELLENT  
Symmetry EXCELLENT  
Fluorescence NONE  
Inscription(s) IGI LG638425327

Comments: This Laboratory Grown Diamond was created by Chemical Vapor Deposition (CVD) growth process.  
Type IIa



June 24, 2024  
IGI Report No. LG638425327  
CUT CORNERED RECT. MODIFIED BRILLIANT  
7.31 X 5.06 X 3.42 MM  
Carat Weight 1.07 CARAT  
Color Grade E  
Clarity Grade VVS 2  
Depth 50.5%  
Table 63%  
Girdle Medium  
Culet Pointed  
Polish EXCELLENT  
Symmetry EXCELLENT  
Fluorescence NONE  
Inscription(s) IGI LG638425327

Comments: This Laboratory Grown Diamond was created by Chemical Vapor Deposition (CVD) growth process.  
Type IIa