



ELECTRONIC COPY

LABORATORY GROWN DIAMOND REPORT

June 24, 2024
IGI Report Number LG638425329
Description LABORATORY GROWN DIAMOND
Shape and Cutting Style CUT CORNERED RECTANGULAR MODIFIED BRILLIANT
Measurements 7.45 X 4.92 X 3.29 MM

GRADING RESULTS

Carat Weight 1.03 CARAT
Color Grade F
Clarity Grade VVS 2

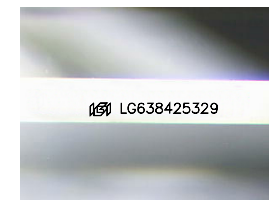
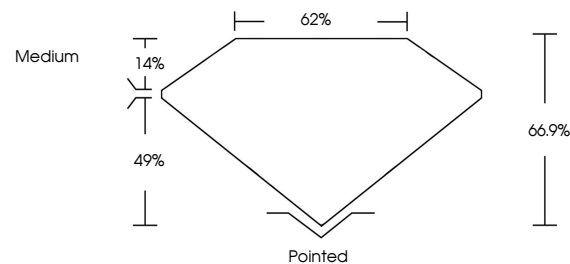
ADDITIONAL GRADING INFORMATION

Polish EXCELLENT
Symmetry EXCELLENT
Fluorescence NONE

Inscription(s) IGI LG638425329

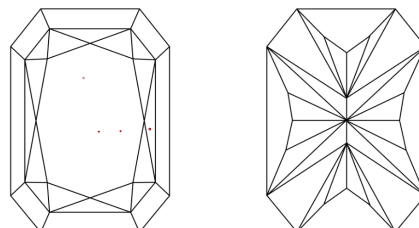
Comments: This Laboratory Grown Diamond was created by Chemical Vapor Deposition (CVD) growth process.
Type IIa

PROPORTIONS



Sample Image Used

CLARITY CHARACTERISTICS



KEY TO SYMBOLS

Red symbols indicate internal characteristics.
Green symbols indicate external characteristics.

COLOR

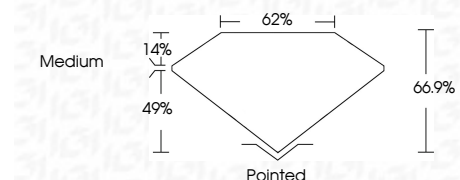
D E F G H I J Faint Very Light Light

CLARITY

IF VS 1-2 VS 1-2 SI 1-2 I 1-3
Internally Flawless Very Very Slightly Included Very Slightly Included Slightly Included Included



June 24, 2024
IGI Report Number LG638425329
Description LABORATORY GROWN DIAMOND
Shape and Cutting Style CUT CORNERED RECTANGULAR MODIFIED BRILLIANT
Measurements 7.45 X 4.92 X 3.29 MM
GRADING RESULTS
Carat Weight 1.03 CARAT
Color Grade F
Clarity Grade VVS 2



ADDITIONAL GRADING INFORMATION

Polish EXCELLENT
Symmetry EXCELLENT
Fluorescence NONE
Inscription(s) IGI LG638425329

Comments: This Laboratory Grown Diamond was created by Chemical Vapor Deposition (CVD) growth process.
Type IIa



IGI



June 24, 2024
IGI Report No LG638425329
CUT CORNERED RECT. MODIFIED BRILLIANT
7.45 X 4.92 X 3.29 MM
Carat Weight 1.03 CARAT
Color Grade F
Clarity Grade VVS 2
Depth 66.9%
Table 62%
Girdle Medium
Culet Pointed
Polish EXCELLENT
Symmetry EXCELLENT
Fluorescence NONE
Inscription(s) IGI LG638425329

Comments: This Laboratory Grown Diamond was created by Chemical Vapor Deposition (CVD) growth process.
Type IIa