



ELECTRONIC COPY

LG638425717
Report verification at igi.org



June 21, 2024

IGI Report Number **LG638425717**

Description **LABORATORY GROWN DIAMOND**

Shape and Cutting Style **PRINCESS CUT**

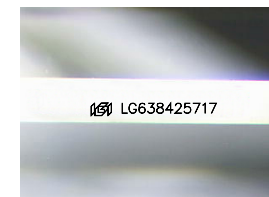
Measurements **6.22 X 6.06 X 4.31 MM**

GRADING RESULTS

Carat Weight **1.45 CARAT**

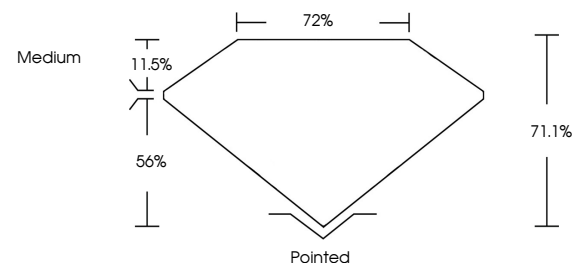
Color Grade **F**

Clarity Grade **VVS 2**

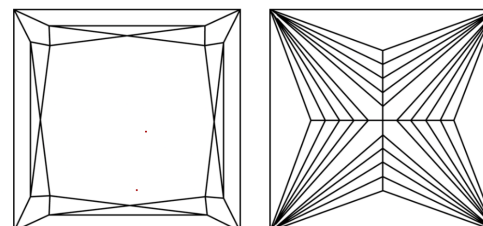


Sample Image Used

PROPORTIONS



CLARITY CHARACTERISTICS



KEY TO SYMBOLS

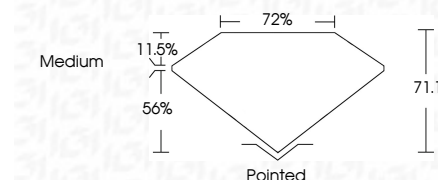
Red symbols indicate internal characteristics.
Green symbols indicate external characteristics.

COLOR

D E F G H I J Faint Very Light Light

CLARITY

IF	VS ¹⁻²	VS ¹⁻²	SI ¹⁻²	I ¹⁻³
Internally Flawless	Very Very Slightly Included	Very Slightly Included	Slightly Included	Included



ADDITIONAL GRADING INFORMATION

Polish **EXCELLENT**

Symmetry **EXCELLENT**

Fluorescence **NONE**

Inscription(s) **IGI LG638425717**

Comments: This Laboratory Grown Diamond was created by Chemical Vapor Deposition (CVD) growth process.
Type IIa



IGI



June 21, 2024
IGI Report No. LG638425717
PRINCESS CUT

6.22 X 6.06 X 4.31 MM

Carat Weight 1.45 CARAT

Color Grade F

Clarity Grade VVS 2

Depth 71.1%

Table 11.5%

Girdle 72%

Culet Medium

Polish EXCELLENT

Symmetry EXCELLENT

Fluorescence NONE

Inscription(s) IGI LG638425717

Comments: This Laboratory Grown Diamond was created by Chemical Vapor Deposition (CVD) growth process.
Type IIa