



ELECTRONIC COPY

LG638427517
Report verification at igi.org



July 8, 2024

IGI Report Number **LG638427517**

Description **LABORATORY GROWN DIAMOND**

Shape and Cutting Style **ROUND BRILLIANT**

Measurements **7.58 - 7.63 X 4.74 MM**

GRADING RESULTS

Carat Weight **1.69 CARAT**

Color Grade **F**

Clarity Grade **VS 1**

Cut Grade **IDEAL**

July 8, 2024

IGI Report Number **LG638427517**

Description **LABORATORY GROWN DIAMOND**

Shape and Cutting Style **ROUND BRILLIANT**

Measurements **7.58 - 7.63 X 4.74 MM**

GRADING RESULTS

Carat Weight **1.69 CARAT**

Color Grade **F**

Clarity Grade **VS 1**

Cut Grade **IDEAL**

ADDITIONAL GRADING INFORMATION

Polish **EXCELLENT**

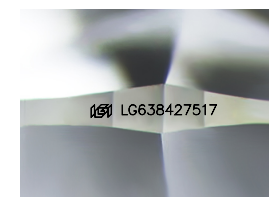
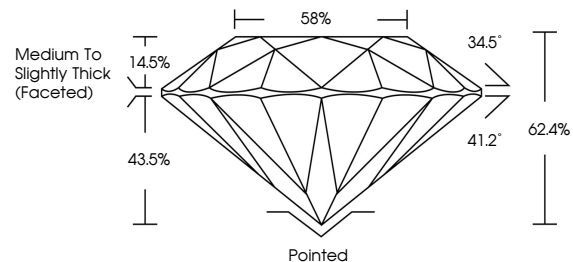
Symmetry **EXCELLENT**

Fluorescence **NONE**

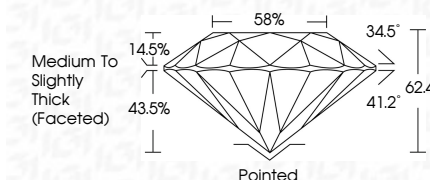
Inscription(s) **IGI LG638427517**

Comments: This Laboratory Grown Diamond was created by Chemical Vapor Deposition (CVD) growth process. Type IIa

PROPORTIONS



Sample Image Used



ADDITIONAL GRADING INFORMATION

Polish **EXCELLENT**

Symmetry **EXCELLENT**

Fluorescence **NONE**

Inscription(s) **IGI LG638427517**

Comments: This Laboratory Grown Diamond was created by Chemical Vapor Deposition (CVD) growth process. Type IIa

COLOR

D E F G H I J Faint Very Light Light

CLARITY

IF VS¹⁻² VS¹⁻² SI¹⁻² I¹⁻³

Internally Flawless Very Very Slightly Included Very Slightly Included Slightly Included Included



IGI



July 8, 2024
IGI Report No LG638427517
ROUND BRILLIANT

7.58 - 7.63 X 4.74 MM
1.69 CARAT
F
VS 1
IDEAL
62.4%
58%
Medium To Slightly Thick (Faceted)

Pointed
EXCELLENT
EXCELLENT
NONE
IGI LG638427517

Cutler
Polish
Symmetry
Fluorescence
Inscription(s)

Comments: This Laboratory Grown Diamond was created by Chemical Vapor Deposition (CVD) growth process. Type IIa