



ELECTRONIC COPY

LG638429235
Report verification at igi.org



June 18, 2024

IGI Report Number **LG638429235**

Description **LABORATORY GROWN DIAMOND**

Shape and Cutting Style **SQUARE EMERALD CUT**

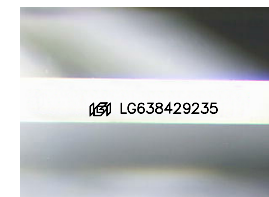
Measurements **6.49 X 6.42 X 4.15 MM**

GRADING RESULTS

Carat Weight **1.54 CARAT**

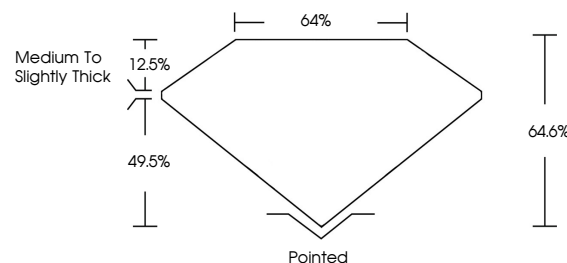
Color Grade **E**

Clarity Grade **VS 1**

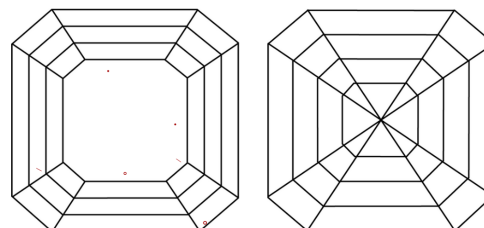


Sample Image Used

PROPORTIONS



CLARITY CHARACTERISTICS



KEY TO SYMBOLS

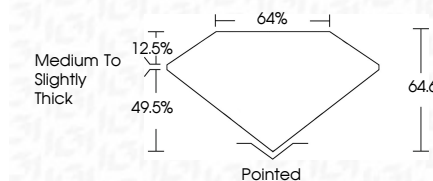
Red symbols indicate internal characteristics.
Green symbols indicate external characteristics.

COLOR

D E F G H I J Faint Very Light Light

CLARITY

| | | | | |
|---------------------|-----------------------------|------------------------|-------------------|------------------|
| IF | VS ¹⁻² | VS ¹⁻² | SI ¹⁻² | I ¹⁻³ |
| Internally Flawless | Very Very Slightly Included | Very Slightly Included | Slightly Included | Included |



ADDITIONAL GRADING INFORMATION

Polish **EXCELLENT**

Symmetry **EXCELLENT**

Fluorescence **NONE**

Inscription(s) **IGI LG638429235**

Comments: This Laboratory Grown Diamond was created by Chemical Vapor Deposition (CVD) growth process.
Type IIa



IGI

| | | | | | | | | | | | | | |
|------------------------------|---------------------------|--------------|-------------|---------------|-------|-------|--------|--------------------------|---------|-----------|-----------|--------------|-----------------|
| June 18, 2024 | IGI Report No LG638429235 | 1.54 CARAT | E | VS 1 | 64.6% | 49.5% | 64% | Medium to Slightly Thick | Pointed | EXCELLENT | EXCELLENT | NONE | IGI LG638429235 |
| SQUARE EMERALD CUT | | Carat Weight | Color Grade | Clarity Grade | Table | Depth | Girdle | | Culet | Polish | Symmetry | Fluorescence | Inscription(s) |
| 6.49 X 6.42 X 4.15 MM | | | | | | | | | | | | | |

Comments: This Laboratory Grown Diamond was created by Chemical Vapor Deposition (CVD) growth process.
Type IIa

