



ELECTRONIC COPY

LG638430200
Report verification at igi.org



June 18, 2024

IGI Report Number **LG638430200**

Description **LABORATORY GROWN DIAMOND**

Shape and Cutting Style **CUT CORNERED
RECTANGULAR MODIFIED
BRILLIANT**

Measurements **7.14 X 5.01 X 3.51 MM**

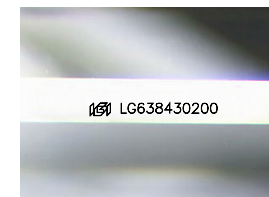
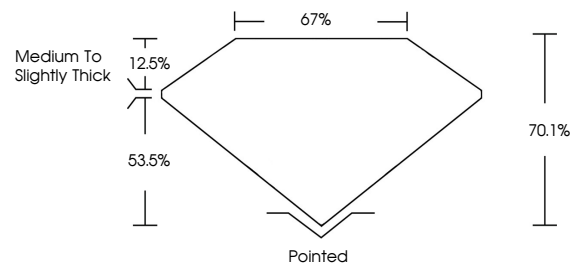
GRADING RESULTS

Carat Weight **1.04 CARAT**

Color Grade **F**

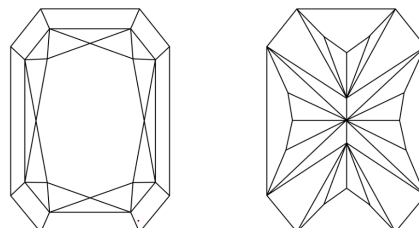
Clarity Grade **VVS 2**

PROPORTIONS



Sample Image Used

CLARITY CHARACTERISTICS



KEY TO SYMBOLS

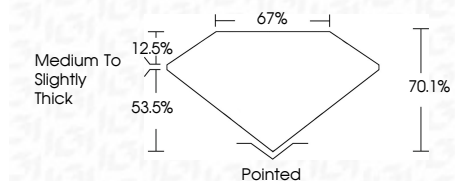
Red symbols indicate internal characteristics.
Green symbols indicate external characteristics.

COLOR

D E F G H I J Faint Very Light Light

CLARITY

IF	VS ¹⁻²	VS ¹⁻²	SI ¹⁻²	I ¹⁻³
Internally Flawless	Very Very Slightly Included	Very Slightly Included	Slightly Included	Included



ADDITIONAL GRADING INFORMATION

Polish **EXCELLENT**

Symmetry **EXCELLENT**

Fluorescence **NONE**

Inscription(s) **IGI LG638430200**

Comments: This Laboratory Grown Diamond was created by Chemical Vapor Deposition (CVD) growth process. Type IIa



IGI



June 18, 2024
IGI Report No. LG638430200
CUT CORNERED RECT. MODIFIED BRILLIANT
7.14 X 5.01 X 3.51 MM
Carat Weight 1.04 CARAT
Color Grade F
Clarity Grade VVS 2
Depth 53.5%
Table 12.5%
Girdle 67%
Medium to Slightly Thick
Culet Pointed
Polish EXCELLENT
Symmetry EXCELLENT
Fluorescence NONE
Inscription(s) IGI LG638430200
Comments: This Laboratory Grown Diamond was created by Chemical Vapor Deposition (CVD) growth process. Type IIa