



**INTERNATIONAL
GEMOLOGICAL
INSTITUTE**

ELECTRONIC COPY

LG638432040

LABORATORY GROWN DIAMOND REPORT

June 7, 2024
 IGI Report Number **LG638432040**
 Description **LABORATORY GROWN DIAMOND**
 Shape and Cutting Style **ROUND BRILLIANT**
 Measurements **5.16 - 5.20 X 3.19 MM**

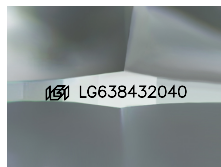
GRADING RESULTS

Carat Weight **0.52 CARAT**
 Color Grade **D**
 Clarity Grade **VVS 2**
 Cut Grade **IDEAL**

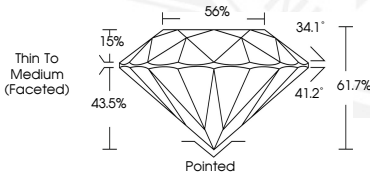
ADDITIONAL GRADING INFORMATION

Polish **EXCELLENT**
 Symmetry **EXCELLENT**
 Fluorescence **NONE**
 Inscription(s) **IGI LG638432040**

Comments: As Grown - No indication of post-growth treatment. This Laboratory Grown Diamond was created by High Pressure High Temperature (HPHT) growth process. Type II



Sample Image Used



June 7, 2024
IGI Report Number LG638432040
ROUND BRILLIANT
LABORATORY GROWN DIAMOND
5.16 - 5.20 X 3.19 MM
 Carat Weight **0.52 CARAT**
 Color Grade **D**
 Clarity Grade **VVS 2**
 Cut Grade **IDEAL**
 Polish **EXCELLENT**
 Symmetry **EXCELLENT**
 Fluorescence **NONE**
 Inscription(s) **IGI LG638432040**
 Comments: As Grown - No indication of post-growth treatment. This Laboratory Grown Diamond was created by High Pressure High Temperature (HPHT) growth process. Type II



June 7, 2024
IGI Report Number LG638432040
ROUND BRILLIANT
LABORATORY GROWN DIAMOND
5.16 - 5.20 X 3.19 MM
 Carat Weight **0.52 CARAT**
 Color Grade **D**
 Clarity Grade **VVS 2**
 Cut Grade **IDEAL**
 Polish **EXCELLENT**
 Symmetry **EXCELLENT**
 Fluorescence **NONE**
 Inscription(s) **IGI LG638432040**
 Comments: As Grown - No indication of post-growth treatment. This Laboratory Grown Diamond was created by High Pressure High Temperature (HPHT) growth process. Type II

THIS DOCUMENT WAS PRODUCED WITH THE FOLLOWING SECURITY MEASURES: SPECIAL DOCUMENT PAPER, INK SCREENS, WATERMARK, BACKGROUND DESIGN, HOLOGRAM AND OTHER SECURITY FEATURES NOT LISTED AND DO EXCEED DOCUMENT SECURITY INDUSTRY GUIDELINES.

For terms & conditions and to verify this report, please visit www.igi.org