



ELECTRONIC COPY

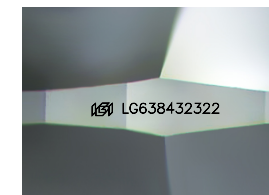
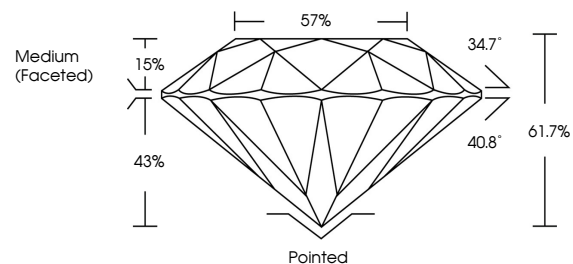
LG638432322
Report verification at igi.org



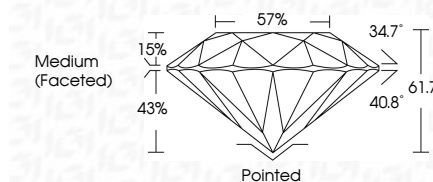
June 7, 2024
IGI Report Number LG638432322
Description LABORATORY GROWN DIAMOND
Shape and Cutting Style ROUND BRILLIANT
Measurements 7.21 - 7.25 X 4.46 MM
GRADING RESULTS
Carat Weight 1.43 CARAT
Color Grade D
Clarity Grade VVS 2
Cut Grade IDEAL

June 7, 2024
IGI Report Number LG638432322
Description LABORATORY GROWN DIAMOND
Shape and Cutting Style ROUND BRILLIANT
Measurements 7.21 - 7.25 X 4.46 MM
GRADING RESULTS
Carat Weight 1.43 CARAT
Color Grade D
Clarity Grade VVS 2
Cut Grade IDEAL

PROPORTIONS



Sample Image Used



ADDITIONAL GRADING INFORMATION

Polish EXCELLENT
Symmetry EXCELLENT
Fluorescence NONE
Inscription(s) IGI LG638432322

Comments: HEARTS & ARROWS
This Laboratory Grown Diamond was created by Chemical Vapor Deposition (CVD) growth process. Type IIa

ADDITIONAL GRADING INFORMATION

Polish EXCELLENT
Symmetry EXCELLENT
Fluorescence NONE
Inscription(s) IGI LG638432322
Comments: HEARTS & ARROWS
This Laboratory Grown Diamond was created by Chemical Vapor Deposition (CVD) growth process. Type IIa

COLOR

D E F G H I J Faint Very Light Light

CLARITY

IF VVS 1-2 VS 1-2 SI 1-2 I 1-3
Internally Flawless Very Very Slightly Included Very Slightly Included Slightly Included Included



IGI

June 7, 2024
IGI Report No LG638432322
ROUND BRILLIANT
1.43 CARAT D
VVS 2 IDEAL 61.7% 57%
Medium (Faceted)
Pointed EXCELLENT EXCELLENT NONE NONE
IGI LG638432322
Comments: HEARTS & ARROWS
This Laboratory Grown Diamond was created by Chemical Vapor Deposition (CVD) growth process. Type IIa