



**INTERNATIONAL
GEMOLOGICAL
INSTITUTE**

ELECTRONIC COPY

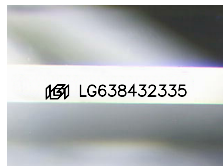
LG638432335



June 12, 2024
IGI Report Number LG638432335
EMERALD CUT
LABORATORY GROWN DIAMOND
5.31 X 3.66 X 2.20 MM
Carat Weight 0.41 CARAT
Color Grade D
Clarity Grade SI 2
Polish VERY GOOD
Symmetry EXCELLENT
Fluorescence NONE
Inscription(s) IGI LG638432335

LABORATORY GROWN DIAMOND REPORT

June 12, 2024
IGI Report Number LG638432335
Description LABORATORY GROWN DIAMOND
Shape and Cutting Style EMERALD CUT
Measurements 5.31 X 3.66 X 2.20 MM



Sample Image Used

Comments: This Laboratory Grown Diamond was created by Chemical Vapor Deposition (CVD) growth process. Type IIa

GRADING RESULTS

Carat Weight 0.41 CARAT
Color Grade D
Clarity Grade SI 2

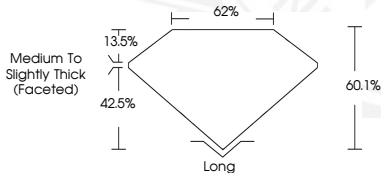
ADDITIONAL GRADING INFORMATION

Polish VERY GOOD
Symmetry EXCELLENT
Fluorescence NONE
Inscription(s) IGI LG638432335

Comments: This Laboratory Grown Diamond was created by Chemical Vapor Deposition (CVD) growth process. Type IIa



June 12, 2024
IGI Report Number LG638432335
EMERALD CUT
LABORATORY GROWN DIAMOND
5.31 X 3.66 X 2.20 MM
Carat Weight 0.41 CARAT
Color Grade D
Clarity Grade SI 2
Polish VERY GOOD
Symmetry EXCELLENT
Fluorescence NONE
Inscription(s) IGI LG638432335



Comments: This Laboratory Grown Diamond was created by Chemical Vapor Deposition (CVD) growth process. Type IIa

THIS DOCUMENT WAS PRODUCED WITH THE FOLLOWING SECURITY MEASURES: SPECIAL DOCUMENT PAPER, INK SCREENS, WATERMARK, BACKGROUND DESIGN, HOLOGRAM AND OTHER SECURITY FEATURES NOT LISTED AND DO EXCEED DOCUMENT SECURITY INDUSTRY GUIDELINES.

For terms & conditions and to verify this report, please visit www.igi.org