



ELECTRONIC COPY

LABORATORY GROWN DIAMOND REPORT

June 8, 2024  
IGI Report Number LG638435833  
Description LABORATORY GROWN DIAMOND  
Shape and Cutting Style EMERALD CUT  
Measurements 7.20 X 4.79 X 3.12 MM

GRADING RESULTS

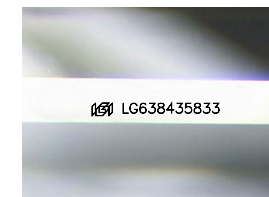
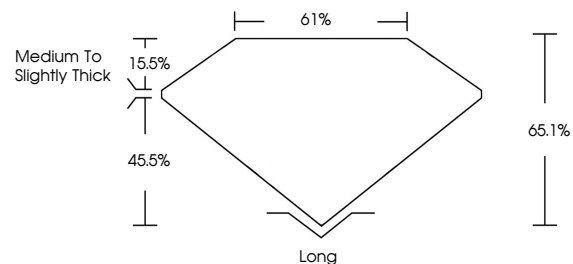
Carat Weight 1.08 CARAT  
Color Grade E  
Clarity Grade VS 1

ADDITIONAL GRADING INFORMATION

Polish VERY GOOD  
Symmetry EXCELLENT  
Fluorescence NONE  
Inscription(s) IGI LG638435833

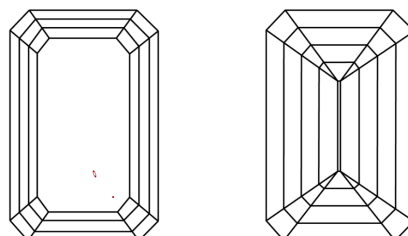
Comments: This Laboratory Grown Diamond was created by Chemical Vapor Deposition (CVD) growth process. Type IIa

PROPORTIONS



Sample Image Used

CLARITY CHARACTERISTICS



KEY TO SYMBOLS

Red symbols indicate internal characteristics.  
Green symbols indicate external characteristics.

COLOR

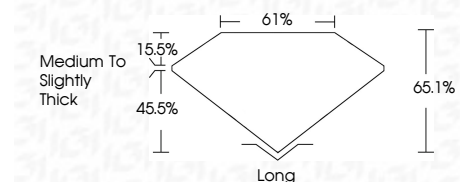
D E F G H I J Faint Very Light Light

CLARITY

IF VS 1-2 VS 1-2 SI 1-2 I 1-3  
Internally Flawless Very Very Slightly Included Very Slightly Included Slightly Included Included



June 8, 2024  
IGI Report Number LG638435833  
Description LABORATORY GROWN DIAMOND  
Shape and Cutting Style EMERALD CUT  
Measurements 7.20 X 4.79 X 3.12 MM  
GRADING RESULTS  
Carat Weight 1.08 CARAT  
Color Grade E  
Clarity Grade VS 1



ADDITIONAL GRADING INFORMATION

Polish VERY GOOD  
Symmetry EXCELLENT  
Fluorescence NONE  
Inscription(s) IGI LG638435833  
Comments: This Laboratory Grown Diamond was created by Chemical Vapor Deposition (CVD) growth process. Type IIa



IGI



June 8, 2024  
IGI Report No. LG638435833  
EMERALD CUT  
7.20 X 4.79 X 3.12 MM  
1.08 CARAT  
E  
Color Grade  
VS 1  
Depth 65.1%  
Table 61%  
Girdle Medium to Slightly Thick  
Culet Long  
Polish VERY GOOD  
Symmetry EXCELLENT  
Fluorescence NONE  
Inscription(s) IGI LG638435833  
Comments: This Laboratory Grown Diamond was created by Chemical Vapor Deposition (CVD) growth process. Type IIa