



ELECTRONIC COPY

LABORATORY GROWN DIAMOND REPORT

June 7, 2024
IGI Report Number LG638438420
Description LABORATORY GROWN DIAMOND
Shape and Cutting Style CUT CORNERED RECTANGULAR MODIFIED BRILLIANT
Measurements 8.84 X 6.31 X 4.39 MM

GRADING RESULTS

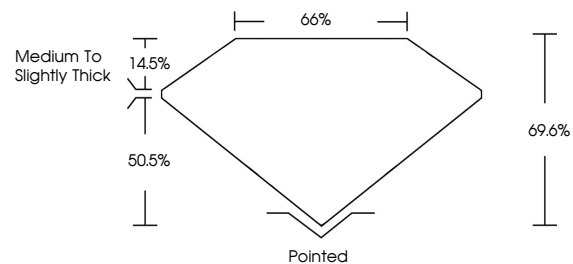
Carat Weight 2.09 CARATS
Color Grade G
Clarity Grade VVS 2

ADDITIONAL GRADING INFORMATION

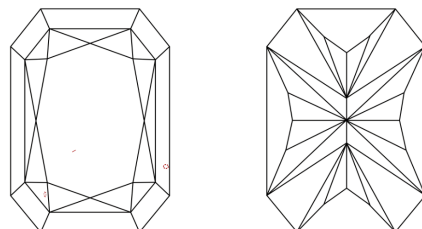
Polish EXCELLENT
Symmetry EXCELLENT
Fluorescence NONE
Inscription(s) IGI LG638438420

Comments: This Laboratory Grown Diamond was created by Chemical Vapor Deposition (CVD) growth process.
Type IIa

PROPORTIONS

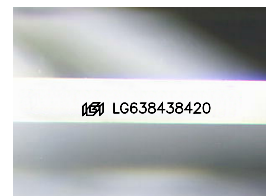


CLARITY CHARACTERISTICS



KEY TO SYMBOLS

Red symbols indicate internal characteristics.
Green symbols indicate external characteristics.



Sample Image Used

COLOR

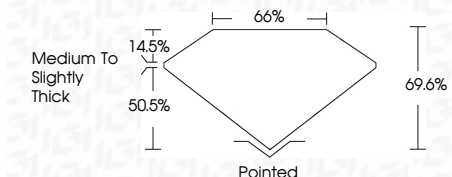
D E F G H I J Faint Very Light Light

CLARITY

IF WS 1-2 VS 1-2 SI 1-2 I 1-3
Internally Flawless Very Very Slightly Included Very Slightly Included Slightly Included Included



June 7, 2024
IGI Report Number LG638438420
Description LABORATORY GROWN DIAMOND
Shape and Cutting Style CUT CORNERED RECTANGULAR MODIFIED BRILLIANT
Measurements 8.84 X 6.31 X 4.39 MM
GRADING RESULTS
Carat Weight 2.09 CARATS
Color Grade G
Clarity Grade VVS 2



ADDITIONAL GRADING INFORMATION

Polish EXCELLENT
Symmetry EXCELLENT
Fluorescence NONE
Inscription(s) IGI LG638438420
Comments: This Laboratory Grown Diamond was created by Chemical Vapor Deposition (CVD) growth process.
Type IIa



IGI



June 7, 2024
IGI Report No LG638438420
CUT CORNERED RECT. MODIFIED BRILLIANT
8.84 X 6.31 X 4.39 MM
2.09 CARATS
Color Grade G
Clarity Grade VVS 2
Depth 69.6%
Table 50.5%
Girdle Medium to Slightly Thick
Culet Pointed
Polish EXCELLENT
Symmetry EXCELLENT
Fluorescence NONE
Inscription(s) IGI LG638438420

Comments: This Laboratory Grown Diamond was created by Chemical Vapor Deposition (CVD) growth process.
Type IIa