



ELECTRONIC COPY

LG638438427 Report verification at igi.org

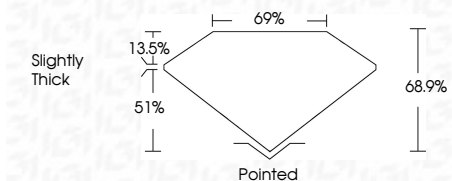


June 7, 2024 IGI Report Number LG638438427 Description LABORATORY GROWN DIAMOND Shape and Cutting Style CUT CORNERED RECTANGULAR MODIFIED BRILLIANT

Measurements 8.71 X 6.10 X 4.20 MM

GRADING RESULTS

Carat Weight 2.05 CARATS Color Grade F Clarity Grade VVS 2



ADDITIONAL GRADING INFORMATION

Polish EXCELLENT Symmetry EXCELLENT Fluorescence NONE Inscription(s) LG638438427 Comments: This Laboratory Grown Diamond was created by Chemical Vapor Deposition (CVD) growth process. Type IIa



June 7, 2024 IGI Report No LG638438427 CUT CORNERED RECT. MODIFIED BRILLIANT 2.05 CARATS F VVS 2 68.9% 69% Slightly Thick Pointed EXCELLENT EXCELLENT NONE LG638438427

Comments: This Laboratory Grown Diamond was created by Chemical Vapor Deposition (CVD) growth process. Type IIa

LABORATORY GROWN DIAMOND REPORT

June 7, 2024 IGI Report Number LG638438427 Description LABORATORY GROWN DIAMOND Shape and Cutting Style CUT CORNERED RECTANGULAR MODIFIED BRILLIANT Measurements 8.71 X 6.10 X 4.20 MM

GRADING RESULTS

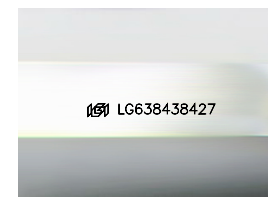
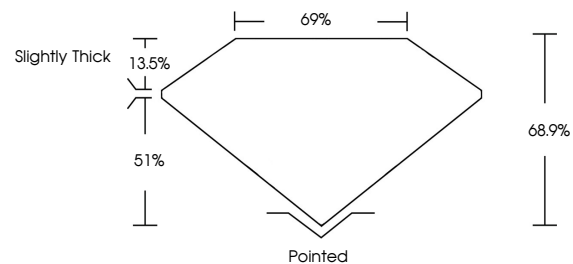
Carat Weight 2.05 CARATS Color Grade F Clarity Grade VVS 2

ADDITIONAL GRADING INFORMATION

Polish EXCELLENT Symmetry EXCELLENT Fluorescence NONE Inscription(s) LG638438427

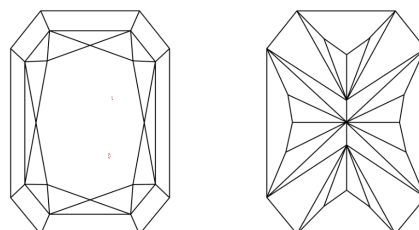
Comments: This Laboratory Grown Diamond was created by Chemical Vapor Deposition (CVD) growth process. Type IIa

PROPORTIONS



Sample Image Used

CLARITY CHARACTERISTICS



KEY TO SYMBOLS

Red symbols indicate internal characteristics. Green symbols indicate external characteristics.

COLOR

D E F G H I J Faint Very Light Light

CLARITY

IF VVS 1-2 VS 1-2 SI 1-2 I 1-3 Internally Flawless Very Very Slightly Included Very Slightly Included Slightly Included Included

