



ELECTRONIC COPY

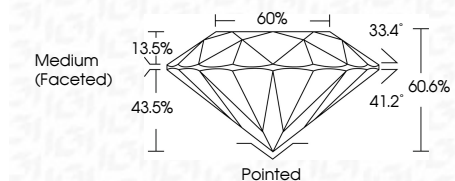
LG638440031
Report verification at igi.org



June 11, 2024
IGI Report Number **LG638440031**
Description **LABORATORY GROWN DIAMOND**
Shape and Cutting Style **ROUND BRILLIANT**
Measurements **6.55 - 6.57 X 3.97 MM**

GRADING RESULTS

Carat Weight **1.05 CARAT**
Color Grade **E**
Clarity Grade **VS 2**
Cut Grade **IDEAL**



ADDITIONAL GRADING INFORMATION

Polish **EXCELLENT**
Symmetry **EXCELLENT**
Fluorescence **NONE**
Inscription(s) **IGI LG638440031**
Comments: This Laboratory Grown Diamond was created by Chemical Vapor Deposition (CVD) growth process. Type IIa



June 11, 2024
IGI Report No LG638440031
ROUND BRILLIANT
6.55 - 6.57 X 3.97 MM
1.05 CARAT
E
VS 2
IDEAL
60.6%
66%
Medium (Faceted)
Pointed
EXCELLENT
EXCELLENT
NONE
IGI LG638440031
Comments: This Laboratory Grown Diamond was created by Chemical Vapor Deposition (CVD) growth process. Type IIa

LABORATORY GROWN DIAMOND REPORT

June 11, 2024
IGI Report Number **LG638440031**
Description **LABORATORY GROWN DIAMOND**
Shape and Cutting Style **ROUND BRILLIANT**
Measurements **6.55 - 6.57 X 3.97 MM**

GRADING RESULTS

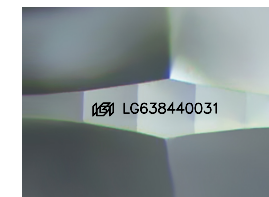
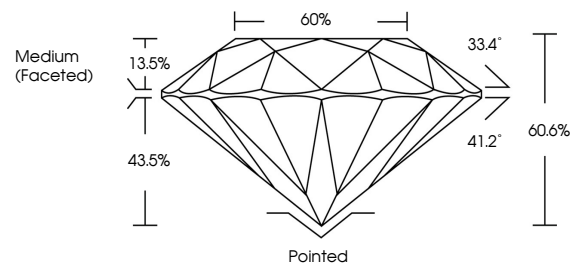
Carat Weight **1.05 CARAT**
Color Grade **E**
Clarity Grade **VS 2**
Cut Grade **IDEAL**

ADDITIONAL GRADING INFORMATION

Polish **EXCELLENT**
Symmetry **EXCELLENT**
Fluorescence **NONE**
Inscription(s) **IGI LG638440031**

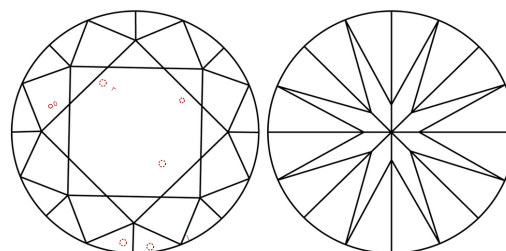
Comments: This Laboratory Grown Diamond was created by Chemical Vapor Deposition (CVD) growth process. Type IIa

PROPORTIONS



Sample Image Used

CLARITY CHARACTERISTICS



KEY TO SYMBOLS

Red symbols indicate internal characteristics.
Green symbols indicate external characteristics.

COLOR

D E F G H I J Faint Very Light Light

CLARITY

| | | | | |
|---------------------|-----------------------------|------------------------|-------------------|------------------|
| IF | VS ¹⁻² | VS ¹⁻² | SI ¹⁻² | I ¹⁻³ |
| Internally Flawless | Very Very Slightly Included | Very Slightly Included | Slightly Included | Included |

