



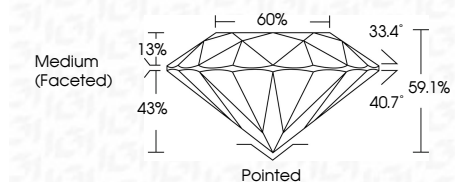
ELECTRONIC COPY

LG638450251 Report verification at igi.org



June 12, 2024 IGI Report Number LG638450251 Description LABORATORY GROWN DIAMOND Shape and Cutting Style ROUND BRILLIANT Measurements 8.23 - 8.29 X 4.89 MM

GRADING RESULTS Carat Weight 2.03 CARATS Color Grade E Clarity Grade VS 1 Cut Grade IDEAL



ADDITIONAL GRADING INFORMATION Polish EXCELLENT Symmetry EXCELLENT Fluorescence NONE Inscription(s) IGI LG638450251 Comments: This Laboratory Grown Diamond was created by Chemical Vapor Deposition (CVD) growth process. Type IIa



June 12, 2024 IGI Report No LG638450251 ROUND BRILLIANT 8.23 - 8.29 X 4.89 MM 2.03 CARATS E VS 1 IDEAL 59.1% 60% Medium (Faceted) Pointed EXCELLENT EXCELLENT NONE IGI LG638450251 Comments: This Laboratory Grown Diamond was created by Chemical Vapor Deposition (CVD) growth process. Type IIa

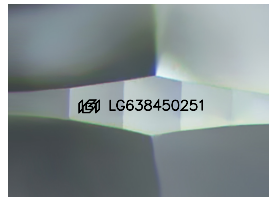
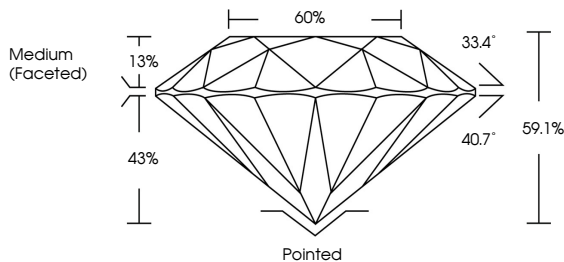
June 12, 2024 IGI Report Number LG638450251 Description LABORATORY GROWN DIAMOND Shape and Cutting Style ROUND BRILLIANT Measurements 8.23 - 8.29 X 4.89 MM

GRADING RESULTS Carat Weight 2.03 CARATS Color Grade E Clarity Grade VS 1 Cut Grade IDEAL

ADDITIONAL GRADING INFORMATION Polish EXCELLENT Symmetry EXCELLENT Fluorescence NONE Inscription(s) IGI LG638450251

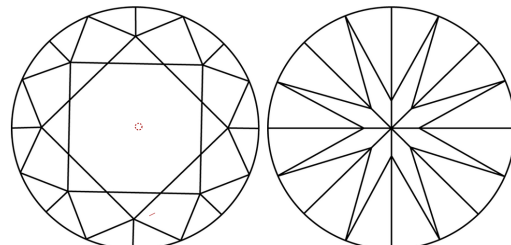
Comments: This Laboratory Grown Diamond was created by Chemical Vapor Deposition (CVD) growth process. Type IIa

PROPORTIONS



Sample Image Used

CLARITY CHARACTERISTICS



KEY TO SYMBOLS Red symbols indicate internal characteristics. Green symbols indicate external characteristics.

Table with columns D, E, F, G, H, I, J, Faint, Very Light, Light

Table with columns IF, VS 1-2, VS 1-2, SI 1-2, I 1-3 and Internally Flawless, Very Very Slightly Included, Very Slightly Included, Slightly Included, Included

