



ELECTRONIC COPY

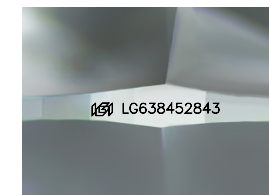
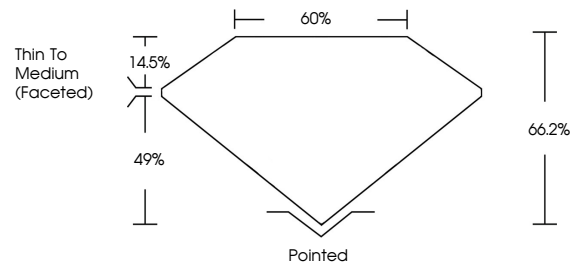
LG638452843
Report verification at igi.org



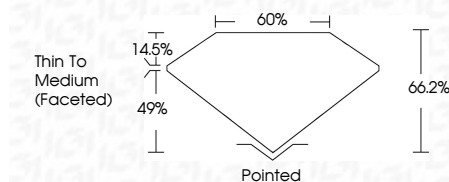
June 10, 2024
IGI Report Number **LG638452843**
Description **LABORATORY GROWN DIAMOND**
Shape and Cutting Style **CUSHION MODIFIED BRILLIANT**
Measurements **8.21 X 6.63 X 4.39 MM**
GRADING RESULTS
Carat Weight **1.82 CARAT**
Color Grade **E**
Clarity Grade **VVS 2**

June 10, 2024
IGI Report Number **LG638452843**
Description **LABORATORY GROWN DIAMOND**
Shape and Cutting Style **CUSHION MODIFIED BRILLIANT**
Measurements **8.21 X 6.63 X 4.39 MM**
GRADING RESULTS
Carat Weight **1.82 CARAT**
Color Grade **E**
Clarity Grade **VVS 2**

PROPORTIONS



Sample Image Used



ADDITIONAL GRADING INFORMATION

Polish **EXCELLENT**
Symmetry **EXCELLENT**
Fluorescence **NONE**
Inscription(s) **IGI LG638452843**

Comments: This Laboratory Grown Diamond was created by Chemical Vapor Deposition (CVD) growth process. Type IIa

ADDITIONAL GRADING INFORMATION

Polish **EXCELLENT**
Symmetry **EXCELLENT**
Fluorescence **NONE**
Inscription(s) **IGI LG638452843**
Comments: This Laboratory Grown Diamond was created by Chemical Vapor Deposition (CVD) growth process. Type IIa

COLOR

D E F G H I J Faint Very Light Light

CLARITY

IF	VVS ¹⁻²	VS ¹⁻²	SI ¹⁻²	I ¹⁻³
Internally Flawless	Very Very Slightly Included	Very Slightly Included	Slightly Included	Included



June 10, 2024
IGI Report No LG638452843
CUSHION MODIFIED BRILLIANT
8.21 X 6.63 X 4.39 MM
1.82 CARAT
E
VVS 2
66.2%
60%
Thin To Medium (Faceted)
Pointed
EXCELLENT
EXCELLENT
NONE
IGI LG638452843
Comments: This Laboratory Grown Diamond was created by Chemical Vapor Deposition (CVD) growth process. Type IIa