



ELECTRONIC COPY

LG638454013 Report verification at igi.org



June 11, 2024 IGI Report Number LG638454013 Description LABORATORY GROWN DIAMOND Shape and Cutting Style ROUND BRILLIANT Measurements 7.30 - 7.34 X 4.42 MM GRADING RESULTS Carat Weight 1.46 CARAT Color Grade E Clarity Grade VS 1 Cut Grade IDEAL

June 11, 2024 IGI Report Number LG638454013 Description LABORATORY GROWN DIAMOND Shape and Cutting Style ROUND BRILLIANT Measurements 7.30 - 7.34 X 4.42 MM

GRADING RESULTS

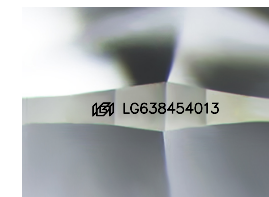
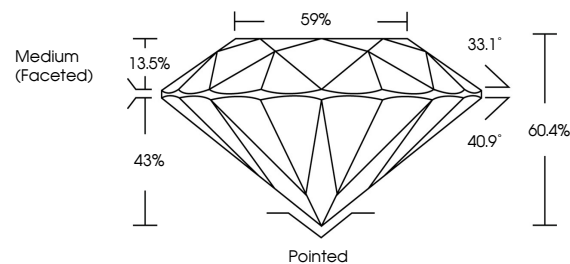
Carat Weight 1.46 CARAT Color Grade E Clarity Grade VS 1 Cut Grade IDEAL

ADDITIONAL GRADING INFORMATION

Polish EXCELLENT Symmetry EXCELLENT Fluorescence NONE Inscription(s) IGI LG638454013

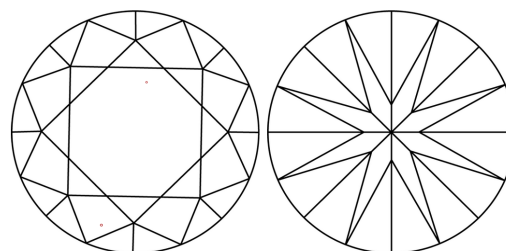
Comments: This Laboratory Grown Diamond was created by Chemical Vapor Deposition (CVD) growth process. Type IIa

PROPORTIONS



Sample Image Used

CLARITY CHARACTERISTICS



KEY TO SYMBOLS

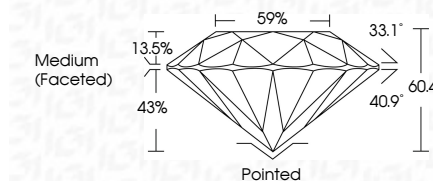
Red symbols indicate internal characteristics. Green symbols indicate external characteristics.

COLOR

D E F G H I J Faint Very Light Light

CLARITY

IF VS 1-2 VS 1-2 SI 1-2 I 1-3 Internally Flawless Very Very Slightly Included Very Slightly Included Slightly Included Included



ADDITIONAL GRADING INFORMATION

Polish EXCELLENT Symmetry EXCELLENT Fluorescence NONE Inscription(s) IGI LG638454013 Comments: This Laboratory Grown Diamond was created by Chemical Vapor Deposition (CVD) growth process. Type IIa



June 11, 2024 IGI Report No LG638454013 ROUND BRILLIANT 7.30 - 7.34 X 4.42 MM 1.46 CARAT E VS 1 IDEAL 60.4% 59% Medium (Faceted) Pointed EXCELLENT EXCELLENT NONE NONE IGI LG638454013 Comments: This Laboratory Grown Diamond was created by Chemical Vapor Deposition (CVD) growth process. Type IIa