



ELECTRONIC COPY

LG638454122
Report verification at igi.org



June 17, 2024
IGI Report Number **LG638454122**
Description **LABORATORY GROWN DIAMOND**
Shape and Cutting Style **CUSHION MODIFIED BRILLIANT**
Measurements **9.43 X 7.28 X 4.99 MM**
GRADING RESULTS
Carat Weight **2.99 CARATS**
Color Grade **FANCY INTENSE YELLOW**
Clarity Grade **VVS 2**

June 17, 2024
IGI Report Number **LG638454122**
Description **LABORATORY GROWN DIAMOND**
Shape and Cutting Style **CUSHION MODIFIED BRILLIANT**
Measurements **9.43 X 7.28 X 4.99 MM**

GRADING RESULTS

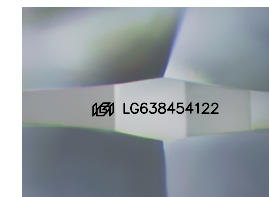
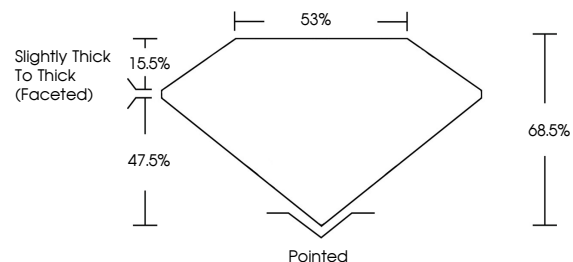
Carat Weight **2.99 CARATS**
Color Grade **FANCY INTENSE YELLOW**
Clarity Grade **VVS 2**

ADDITIONAL GRADING INFORMATION

Polish **EXCELLENT**
Symmetry **EXCELLENT**
Fluorescence **NONE**
Inscription(s) **IGI LG638454122**

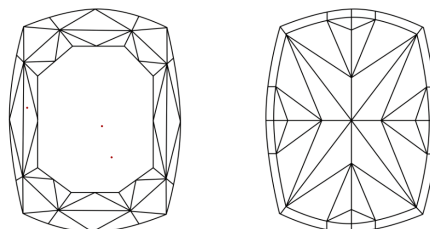
Comments: This Laboratory Grown Diamond was created by Chemical Vapor Deposition (CVD) growth process.

PROPORTIONS



Sample Image Used

CLARITY CHARACTERISTICS



KEY TO SYMBOLS

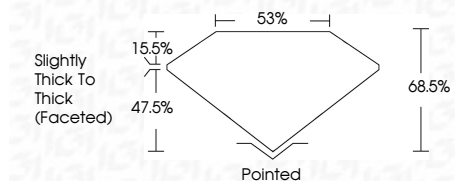
Red symbols indicate internal characteristics.
Green symbols indicate external characteristics.

COLOR

D E F G H I J Faint Very Light Light

CLARITY

| | | | | |
|---------------------|-----------------------------|------------------------|-------------------|------------------|
| IF | VVS ¹⁻² | VS ¹⁻² | SI ¹⁻² | I ¹⁻³ |
| Internally Flawless | Very Very Slightly Included | Very Slightly Included | Slightly Included | Included |



ADDITIONAL GRADING INFORMATION

Polish **EXCELLENT**
Symmetry **EXCELLENT**
Fluorescence **NONE**
Inscription(s) **IGI LG638454122**
Comments: This Laboratory Grown Diamond was created by Chemical Vapor Deposition (CVD) growth process.



June 17, 2024
IGI Report No LG638454122
CUSHION MODIFIED BRILLIANT
9.43 X 7.28 X 4.99 MM
2.99 CARATS
Color Grade **FANCY INTENSE YELLOW**
Clarity Grade **VVS 2**
Depth **68.5%**
Table **53%**
Girdle **Slightly Thick To Thick (Faceted)**
Culet **Pointed**
Polish **EXCELLENT**
Symmetry **EXCELLENT**
Fluorescence **NONE**
Inscription(s) **IGI LG638454122**
Comments: This Laboratory Grown Diamond was created by Chemical Vapor Deposition (CVD) growth process.