



**INTERNATIONAL  
GEMOLOGICAL  
INSTITUTE**

**ELECTRONIC COPY**

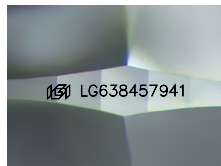
**LG638457941**



June 11, 2024  
**IGI Report Number** LG638457941  
**ROUND BRILLIANT**  
**LABORATORY GROWN DIAMOND**  
**5.57 - 5.60 X 3.43 MM**  
**Carat Weight** 0.66 CARAT  
**Color Grade** E  
**Clarity Grade** VS 2  
**Cut Grade** IDEAL  
**Polish** EXCELLENT  
**Symmetry** EXCELLENT  
**Fluorescence** NONE  
**Inscription(s)** IGI LG638457941

**LABORATORY GROWN DIAMOND REPORT**

June 11, 2024  
**IGI Report Number** LG638457941  
**Description** LABORATORY GROWN DIAMOND  
**Shape and Cutting Style** ROUND BRILLIANT  
**Measurements** 5.57 - 5.60 X 3.43 MM



Sample Image Used

**Comments:** This Laboratory Grown Diamond was created by Chemical Vapor Deposition (CVD) growth process. Type IIa

**GRADING RESULTS**

**Carat Weight** 0.66 CARAT  
**Color Grade** E  
**Clarity Grade** VS 2  
**Cut Grade** IDEAL

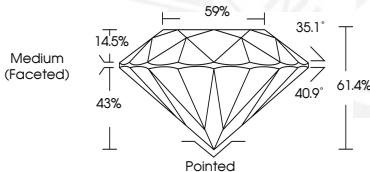
**ADDITIONAL GRADING INFORMATION**

**Polish** EXCELLENT  
**Symmetry** EXCELLENT  
**Fluorescence** NONE  
**Inscription(s)** IGI LG638457941

**Comments:** This Laboratory Grown Diamond was created by Chemical Vapor Deposition (CVD) growth process. Type IIa



June 11, 2024  
**IGI Report Number** LG638457941  
**ROUND BRILLIANT**  
**LABORATORY GROWN DIAMOND**  
**5.57 - 5.60 X 3.43 MM**  
**Carat Weight** 0.66 CARAT  
**Color Grade** E  
**Clarity Grade** VS 2  
**Cut Grade** IDEAL  
**Polish** EXCELLENT  
**Symmetry** EXCELLENT  
**Fluorescence** NONE  
**Inscription(s)** IGI LG638457941



**Comments:** This Laboratory Grown Diamond was created by Chemical Vapor Deposition (CVD) growth process. Type IIa

THIS DOCUMENT WAS PRODUCED WITH THE FOLLOWING SECURITY MEASURES: SPECIAL DOCUMENT PAPER, INK SCREENS, WATERMARK, BACKGROUND DESIGNS, HOLOGRAM AND OTHER SECURITY FEATURES NOT LISTED AND DO EXCEED DOCUMENT SECURITY INDUSTRY GUIDELINES.

For terms & conditions and to verify this report, please visit [www.igi.org](http://www.igi.org)