



**ELECTRONIC COPY**

LG638461410  
Report verification at igi.org



June 14, 2024

IGI Report Number **LG638461410**

Description **LABORATORY GROWN DIAMOND**

Shape and Cutting Style **CUT CORNERED  
RECTANGULAR MODIFIED  
BRILLIANT**

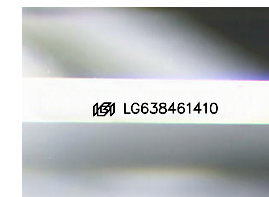
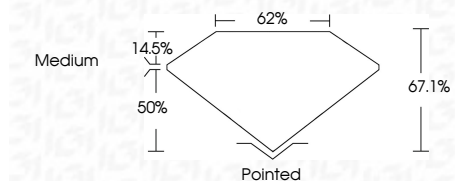
Measurements **9.38 X 6.63 X 4.45 MM**

**GRADING RESULTS**

Carat Weight **2.39 CARATS**

Color Grade **E**

Clarity Grade **VS 1**



Sample Image Used

**ADDITIONAL GRADING INFORMATION**

Polish **EXCELLENT**

Symmetry **EXCELLENT**

Fluorescence **NONE**

Inscription(s) **IGI LG638461410**

Comments: This Laboratory Grown Diamond was created by Chemical Vapor Deposition (CVD) growth process. Type IIa



**IGI**

June 14, 2024  
IGI Report No LG638461410  
CUT CORNERED RECT. MODIFIED BRILLIANT  
9.38 X 6.63 X 4.45 MM  
2.39 CARATS  
E  
VS 1  
67.1%  
62%  
Medium  
Pointed  
EXCELLENT  
EXCELLENT  
NONE  
IGI LG638461410  
Comments: This Laboratory Grown Diamond was created by Chemical Vapor Deposition (CVD) growth process. Type IIa

**LABORATORY GROWN DIAMOND REPORT**

June 14, 2024

IGI Report Number **LG638461410**

Description **LABORATORY GROWN DIAMOND**

Shape and Cutting Style **CUT CORNERED RECTANGULAR  
MODIFIED BRILLIANT**

Measurements **9.38 X 6.63 X 4.45 MM**

**GRADING RESULTS**

Carat Weight **2.39 CARATS**

Color Grade **E**

Clarity Grade **VS 1**

**ADDITIONAL GRADING INFORMATION**

Polish **EXCELLENT**

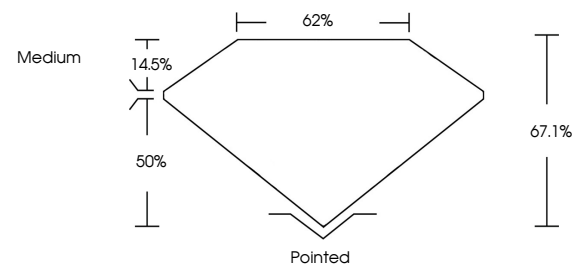
Symmetry **EXCELLENT**

Fluorescence **NONE**

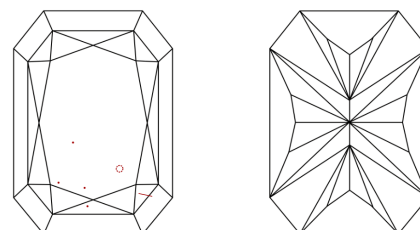
Inscription(s) **IGI LG638461410**

Comments: This Laboratory Grown Diamond was created by Chemical Vapor Deposition (CVD) growth process. Type IIa

**PROPORTIONS**



**CLARITY CHARACTERISTICS**



**KEY TO SYMBOLS**

Red symbols indicate internal characteristics.  
Green symbols indicate external characteristics.

**COLOR**

D E F G H I J Faint Very Light Light

**CLARITY**

IF	VS <sup>1-2</sup>	VS <sup>1-2</sup>	SI <sup>1-2</sup>	I <sup>1-3</sup>
Internally Flawless	Very Very Slightly Included	Very Slightly Included	Slightly Included	Included

