



ELECTRONIC COPY

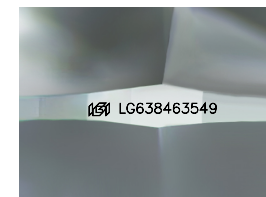
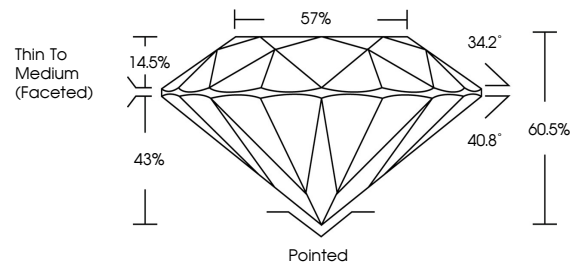
LG638463549 Report verification at igi.org



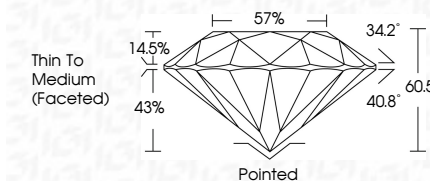
June 10, 2024
IGI Report Number LG638463549
Description LABORATORY GROWN DIAMOND
Shape and Cutting Style ROUND BRILLIANT
Measurements 7.22 - 7.25 X 4.37 MM
GRADING RESULTS
Carat Weight 1.38 CARAT
Color Grade D
Clarity Grade VVS 2
Cut Grade IDEAL

June 10, 2024
IGI Report Number LG638463549
Description LABORATORY GROWN DIAMOND
Shape and Cutting Style ROUND BRILLIANT
Measurements 7.22 - 7.25 X 4.37 MM
GRADING RESULTS
Carat Weight 1.38 CARAT
Color Grade D
Clarity Grade VVS 2
Cut Grade IDEAL

PROPORTIONS



Sample Image Used



ADDITIONAL GRADING INFORMATION

Polish EXCELLENT
Symmetry EXCELLENT
Fluorescence NONE
Inscription(s) IGI LG638463549

ADDITIONAL GRADING INFORMATION

Polish EXCELLENT
Symmetry EXCELLENT
Fluorescence NONE
Inscription(s) IGI LG638463549
Comments: HEARTS & ARROWS
This Laboratory Grown Diamond was created by Chemical Vapor Deposition (CVD) growth process. Type IIa

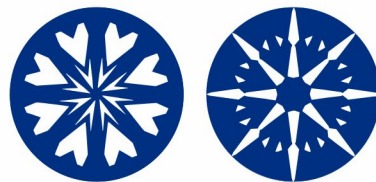
Comments: HEARTS & ARROWS
This Laboratory Grown Diamond was created by Chemical Vapor Deposition (CVD) growth process. Type IIa

COLOR

D E F G H I J Faint Very Light Light

CLARITY

IF VVS 1-2 VS 1-2 SI 1-2 I 1-3
Internally Flawless Very Very Slightly Included Very Slightly Included Slightly Included Included



IGI

June 10, 2024
IGI Report No LG638463549
ROUND BRILLIANT
1.38 CARAT D
VVS 2 IDEAL
60.5% 57%
Thin To Medium (Faceted)
Pointed EXCELLENT EXCELLENT NONE
IGI LG638463549
Comments: HEARTS & ARROWS
This Laboratory Grown Diamond was created by Chemical Vapor Deposition (CVD) growth process. Type IIa