



ELECTRONIC COPY

LG638465170
Report verification at igi.org



June 13, 2024

IGI Report Number **LG638465170**

Description **LABORATORY GROWN DIAMOND**

Shape and Cutting Style **CUT CORNERED
RECTANGULAR MODIFIED
BRILLIANT**

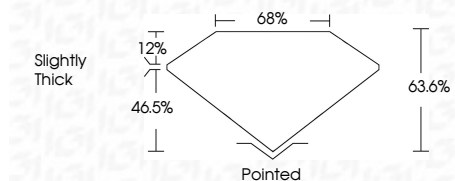
Measurements **8.41 X 6.13 X 3.90 MM**

GRADING RESULTS

Carat Weight **1.98 CARAT**

Color Grade **D**

Clarity Grade **VS 1**



ADDITIONAL GRADING INFORMATION

Polish **EXCELLENT**

Symmetry **EXCELLENT**

Fluorescence **NONE**

Inscription(s) **IGI LG638465170**

Comments: This Laboratory Grown Diamond was created by Chemical Vapor Deposition (CVD) growth process. Type IIa



June 13, 2024	IGI Report No LG638465170	CUT CORNERED RECT. MODIFIED BRILLIANT	8.41 X 6.13 X 3.90 MM	1.98 CARAT	D	VS 1	46.5%	68%	Slightly Thick	Pointed	EXCELLENT	EXCELLENT	NONE	IGI LG638465170
<p>Comments: This Laboratory Grown Diamond was created by Chemical Vapor Deposition (CVD) growth process. Type IIa</p>														

LABORATORY GROWN DIAMOND REPORT

June 13, 2024
IGI Report Number **LG638465170**
Description **LABORATORY GROWN DIAMOND**
Shape and Cutting Style **CUT CORNERED RECTANGULAR
MODIFIED BRILLIANT**
Measurements **8.41 X 6.13 X 3.90 MM**

GRADING RESULTS

Carat Weight **1.98 CARAT**

Color Grade **D**

Clarity Grade **VS 1**

ADDITIONAL GRADING INFORMATION

Polish **EXCELLENT**

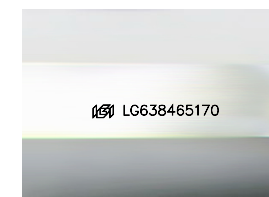
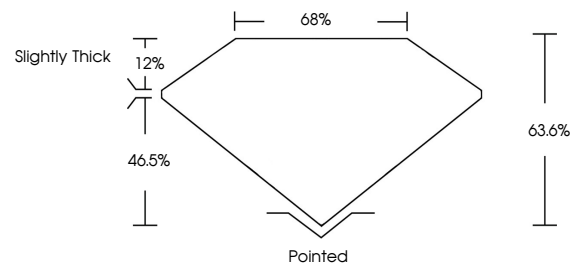
Symmetry **EXCELLENT**

Fluorescence **NONE**

Inscription(s) **IGI LG638465170**

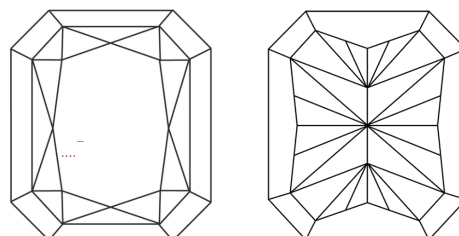
Comments: This Laboratory Grown Diamond was created by Chemical Vapor Deposition (CVD) growth process. Type IIa

PROPORTIONS



Sample Image Used

CLARITY CHARACTERISTICS



KEY TO SYMBOLS

Red symbols indicate internal characteristics.
Green symbols indicate external characteristics.

COLOR

D E F G H I J Faint Very Light Light

CLARITY

IF	VS ¹⁻²	VS ¹⁻²	SI ¹⁻²	I ¹⁻³
Internally Flawless	Very Very Slightly Included	Very Slightly Included	Slightly Included	Included

