



ELECTRONIC COPY

LG638473010
Report verification at igi.org



July 4, 2024
IGI Report Number **LG638473010**
Description **LABORATORY GROWN DIAMOND**
Shape and Cutting Style **CUT CORNERED
RECTANGULAR MODIFIED
BRILLIANT**
Measurements **13.36 X 8.71 X 5.54 MM**
GRADING RESULTS
Carat Weight **6.06 CARATS**
Color Grade **FANCY INTENSE PINK**
Clarity Grade **VS 2**

LABORATORY GROWN DIAMOND REPORT

July 4, 2024
IGI Report Number **LG638473010**
Description **LABORATORY GROWN DIAMOND**
Shape and Cutting Style **CUT CORNERED RECTANGULAR
MODIFIED BRILLIANT**
Measurements **13.36 X 8.71 X 5.54 MM**

GRADING RESULTS

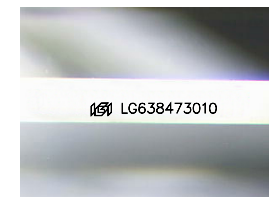
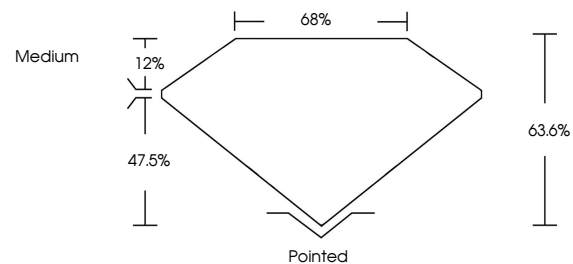
Carat Weight **6.06 CARATS**
Color Grade **FANCY INTENSE PINK**
Clarity Grade **VS 2**

ADDITIONAL GRADING INFORMATION

Polish **EXCELLENT**
Symmetry **EXCELLENT**
Fluorescence **SLIGHT**
Inscription(s) **IGI LG638473010**

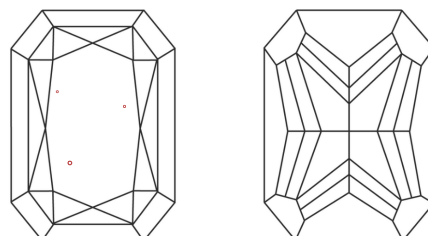
Comments: This Laboratory Grown Diamond was created by Chemical Vapor Deposition (CVD) growth process. Indications of post-growth treatment.

PROPORTIONS



Sample Image Used

CLARITY CHARACTERISTICS



KEY TO SYMBOLS

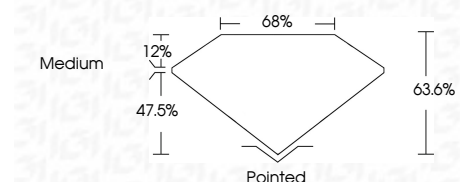
Red symbols indicate internal characteristics.
Green symbols indicate external characteristics.

COLOR

D E F G H I J Faint Very Light Light

CLARITY

IF	VS ¹⁻²	VS ¹⁻²	SI ¹⁻²	I ¹⁻³
Internally Flawless	Very Very Slightly Included	Very Slightly Included	Slightly Included	Included



ADDITIONAL GRADING INFORMATION

Polish **EXCELLENT**
Symmetry **EXCELLENT**
Fluorescence **SLIGHT**
Inscription(s) **IGI LG638473010**
Comments: This Laboratory Grown Diamond was created by Chemical Vapor Deposition (CVD) growth process. Indications of post-growth treatment.



IGI

July 4, 2024
IGI Report No **LG638473010**
CUT CORNERED RECT. MODIFIED BRILLIANT
13.36 X 8.71 X 5.54 MM
6.06 CARATS
FANCY INTENSE PINK
VS 2
63.6%
47.5%
Medium
Pointed
EXCELLENT
EXCELLENT
SLIGHT
IGI LG638473010
Comments: This Laboratory Grown Diamond was created by Chemical Vapor Deposition (CVD) growth process. Indications of post-growth treatment.