



ELECTRONIC COPY

LG638478309
Report verification at igi.org



June 20, 2024
IGI Report Number LG638478309
Description LABORATORY GROWN DIAMOND
Shape and Cutting Style ROUND BRILLIANT
Measurements 8.07 - 8.11 X 4.92 MM
GRADING RESULTS
Carat Weight 1.95 CARAT
Color Grade F
Clarity Grade VS 2
Cut Grade IDEAL

June 20, 2024
IGI Report Number LG638478309
Description LABORATORY GROWN DIAMOND
Shape and Cutting Style ROUND BRILLIANT
Measurements 8.07 - 8.11 X 4.92 MM

GRADING RESULTS

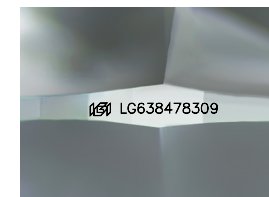
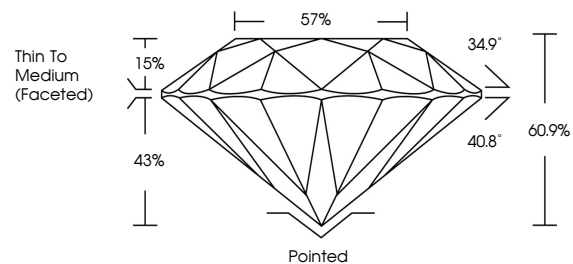
Carat Weight 1.95 CARAT
Color Grade F
Clarity Grade VS 2
Cut Grade IDEAL

ADDITIONAL GRADING INFORMATION

Polish EXCELLENT
Symmetry EXCELLENT
Fluorescence NONE
Inscription(s) IGI LG638478309

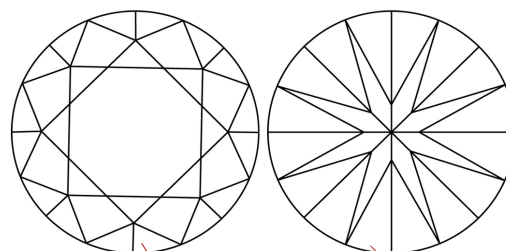
Comments: This Laboratory Grown Diamond was created by Chemical Vapor Deposition (CVD) growth process. Type IIa

PROPORTIONS



Sample Image Used

CLARITY CHARACTERISTICS



KEY TO SYMBOLS

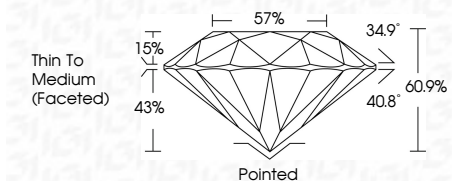
Red symbols indicate internal characteristics.
Green symbols indicate external characteristics.

COLOR

D E F G H I J Faint Very Light Light

CLARITY

IF VS 1-2 VS 1-2 SI 1-2 I 1-3
Internally Flawless Very Very Slightly Included Very Slightly Included Slightly Included Included



ADDITIONAL GRADING INFORMATION

Polish EXCELLENT
Symmetry EXCELLENT
Fluorescence NONE
Inscription(s) IGI LG638478309
Comments: This Laboratory Grown Diamond was created by Chemical Vapor Deposition (CVD) growth process. Type IIa



IGI



June 20, 2024
IGI Report No LG638478309
ROUND BRILLIANT
8.07 - 8.11 X 4.92 MM
1.95 CARAT
F
VS 2
IDEAL
60.9%
57%
Thin To Medium (Faceted)
Pointed
EXCELLENT
EXCELLENT
NONE
IGI LG638478309
Comments: This Laboratory Grown Diamond was created by Chemical Vapor Deposition (CVD) growth process. Type IIa