



ELECTRONIC COPY

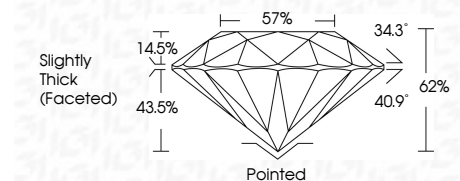
LG638478419
Report verification at igi.org



June 20, 2024
IGI Report Number: LG638478419
Description: LABORATORY GROWN DIAMOND
Shape and Cutting Style: ROUND BRILLIANT
Measurements: 7.88 - 7.92 X 4.90 MM

GRADING RESULTS

Carat Weight: 1.90 CARAT
Color Grade: E
Clarity Grade: VS 1
Cut Grade: IDEAL



ADDITIONAL GRADING INFORMATION

Polish: EXCELLENT
Symmetry: EXCELLENT
Fluorescence: NONE
Inscription(s): IGI LG638478419
Comments: This Laboratory Grown Diamond was created by Chemical Vapor Deposition (CVD) growth process. Type IIa



June 20, 2024
IGI Report No LG638478419
ROUND BRILLIANT
7.88 - 7.92 X 4.90 MM
1.90 CARAT
E
VS 1
IDEAL
62%
57%
Slightly Thick (Faceted)
Pointed
EXCELLENT
EXCELLENT
NONE
IGI LG638478419
Comments: This Laboratory Grown Diamond was created by Chemical Vapor Deposition (CVD) growth process. Type IIa

June 20, 2024
IGI Report Number: LG638478419
Description: LABORATORY GROWN DIAMOND
Shape and Cutting Style: ROUND BRILLIANT
Measurements: 7.88 - 7.92 X 4.90 MM

GRADING RESULTS

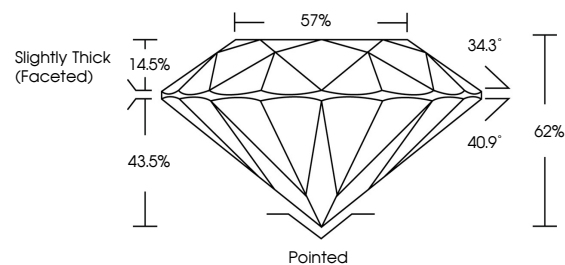
Carat Weight: 1.90 CARAT
Color Grade: E
Clarity Grade: VS 1
Cut Grade: IDEAL

ADDITIONAL GRADING INFORMATION

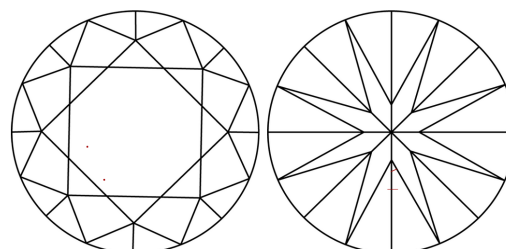
Polish: EXCELLENT
Symmetry: EXCELLENT
Fluorescence: NONE
Inscription(s): IGI LG638478419

Comments: This Laboratory Grown Diamond was created by Chemical Vapor Deposition (CVD) growth process. Type IIa

PROPORTIONS

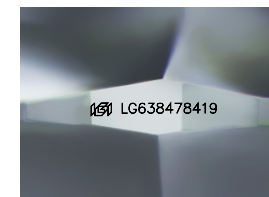


CLARITY CHARACTERISTICS



KEY TO SYMBOLS

Red symbols indicate internal characteristics.
Green symbols indicate external characteristics.



Sample Image Used

COLOR

D E F G H I J Faint Very Light Light

CLARITY

IF VS 1-2 VS 1-2 SI 1-2 I 1-3
Internally Flawless Very Very Slightly Included Very Slightly Included Slightly Included Included

