



ELECTRONIC COPY

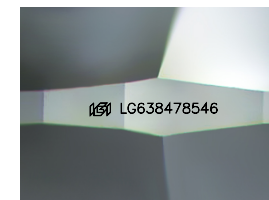
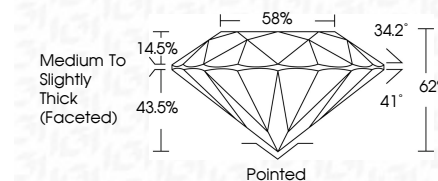
LG638478546
Report verification at igi.org



June 25, 2024
IGI Report Number: LG638478546
Description: LABORATORY GROWN DIAMOND
Shape and Cutting Style: ROUND BRILLIANT
Measurements: 7.13 - 7.16 X 4.43 MM

GRADING RESULTS

Carat Weight: 1.40 CARAT
Color Grade: E
Clarity Grade: VVS 2
Cut Grade: IDEAL



Sample Image Used

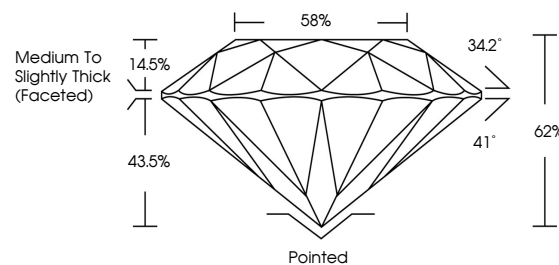
ADDITIONAL GRADING INFORMATION

Polish: EXCELLENT
Symmetry: EXCELLENT
Fluorescence: NONE
Inscription(s): IGI LG638478546
Comments: As Grown - No indication of post-growth treatment. This Laboratory Grown Diamond was created by High Pressure High Temperature (HPHT) growth process. Type II

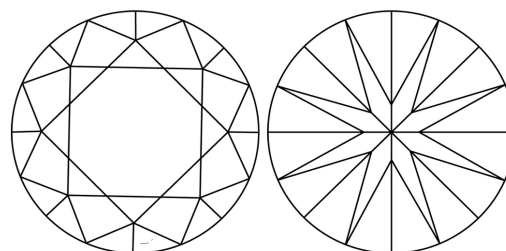


June 25, 2024
IGI Report No LG638478546
ROUND BRILLIANT
1.40 CARAT
E
7.13 - 7.16 X 4.43 MM
Color Grade: EXCELLENT
Clarity Grade: VVS 2
Depth: IDEAL
Table: 62%
Girdle: 68%
Medium To Slightly Thick (Faceted)
Culet: Pointed
Polish: EXCELLENT
Symmetry: EXCELLENT
Fluorescence: NONE
Inscriptions(s): IGI LG638478546
Comments: As Grown - No indication of post-growth treatment. This Laboratory Grown Diamond was created by High Pressure High Temperature (HPHT) growth process. Type II

PROPORTIONS



CLARITY CHARACTERISTICS



KEY TO SYMBOLS

Red symbols indicate internal characteristics.
Green symbols indicate external characteristics.

COLOR

D E F G H I J Faint Very Light Light

CLARITY

IF VS 1-2 VS 1-2 SI 1-2 I 1-3
Internally Flawless Very Very Slightly Included Very Slightly Included Slightly Included Included

