



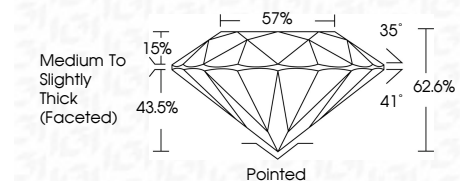
ELECTRONIC COPY

LG638478716 Report verification at igi.org



June 25, 2024 IGI Report Number LG638478716 Description LABORATORY GROWN DIAMOND Shape and Cutting Style ROUND BRILLIANT Measurements 7.11 - 7.15 X 4.46 MM

GRADING RESULTS Carat Weight 1.41 CARAT Color Grade E Clarity Grade VVS 2 Cut Grade EXCELLENT



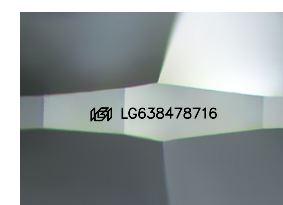
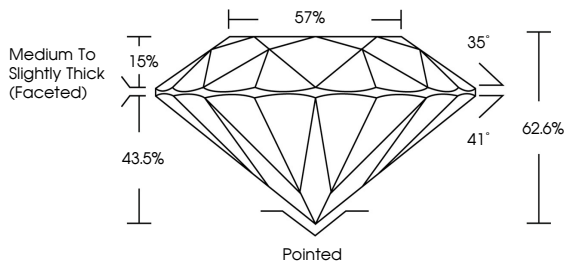
ADDITIONAL GRADING INFORMATION Polish EXCELLENT Symmetry EXCELLENT Fluorescence NONE Inscription(s) LG638478716 Comments: This Laboratory Grown Diamond was created by Chemical Vapor Deposition (CVD) growth process. Type IIa



June 25, 2024 IGI Report No LG638478716 ROUND BRILLIANT 7.11 - 7.15 X 4.46 MM 1.41 CARAT E VVS 2 EXCELLENT 62.6% 35° 41° Medium To Slightly Thick (Faceted) Pointed EXCELLENT EXCELLENT NONE NONE LG638478716

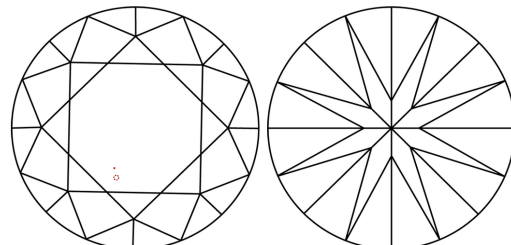
June 25, 2024 IGI Report Number LG638478716 Description LABORATORY GROWN DIAMOND Shape and Cutting Style ROUND BRILLIANT Measurements 7.11 - 7.15 X 4.46 MM GRADING RESULTS Carat Weight 1.41 CARAT Color Grade E Clarity Grade VVS 2 Cut Grade EXCELLENT ADDITIONAL GRADING INFORMATION Polish EXCELLENT Symmetry EXCELLENT Fluorescence NONE Inscription(s) LG638478716

PROPORTIONS



Sample Image Used

CLARITY CHARACTERISTICS



KEY TO SYMBOLS Red symbols indicate internal characteristics. Green symbols indicate external characteristics.

COLOR D E F G H I J Faint Very Light Light

CLARITY IF VVS 1-2 VS 1-2 SI 1-2 I 1-3 Internally Flawless Very Very Slightly Included Very Slightly Included Slightly Included Included



THIS DOCUMENT WAS PRODUCED WITH THE FOLLOWING SECURITY MEASURES: SPECIAL DOCUMENT PAPER, INK SCREENS, WATERMARK BACKGROUND DESIGNS, HOLOGRAM AND OTHER SECURITY FEATURES NOT LISTED AND DO EXCEED DOCUMENT SECURITY INDUSTRY GUIDELINES.