



ELECTRONIC COPY

LG638479481 Report verification at igi.org



June 28, 2024

IGI Report Number LG638479481

Description LABORATORY GROWN DIAMOND

Shape and Cutting Style ROUND BRILLIANT

Measurements 11.21 - 11.25 X 6.54 MM

GRADING RESULTS

Carat Weight 5.00 CARATS

Color Grade J

Clarity Grade SI 1

Cut Grade VERY GOOD

June 28, 2024 IGI Report Number LG638479481 Description LABORATORY GROWN DIAMOND Shape and Cutting Style ROUND BRILLIANT Measurements 11.21 - 11.25 X 6.54 MM

GRADING RESULTS

Carat Weight 5.00 CARATS

Color Grade J

Clarity Grade SI 1

Cut Grade VERY GOOD

ADDITIONAL GRADING INFORMATION

Polish EXCELLENT

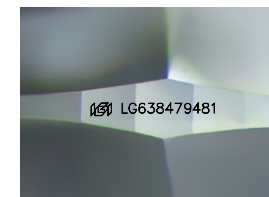
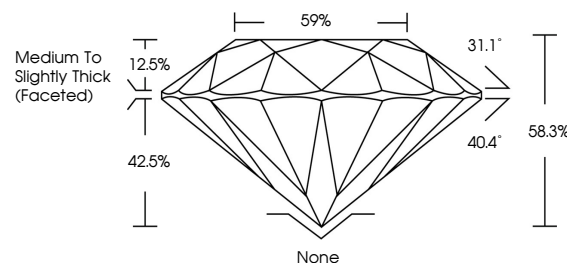
Symmetry EXCELLENT

Fluorescence NONE

Inscription(s) IGI LG638479481

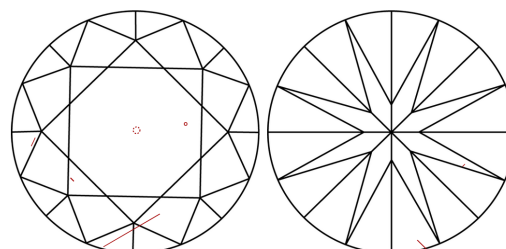
Comments: This Laboratory Grown Diamond was created by Chemical Vapor Deposition (CVD) growth process. Type IIa

PROPORTIONS



Sample Image Used

CLARITY CHARACTERISTICS



KEY TO SYMBOLS

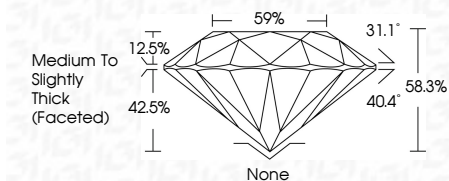
Red symbols indicate internal characteristics. Green symbols indicate external characteristics.

COLOR

D E F G H I J Faint Very Light Light

CLARITY

IF VS 1-2 VS 1-2 SI 1-2 I 1-3 Internally Flawless Very Very Slightly Included Very Slightly Included Slightly Included Included



ADDITIONAL GRADING INFORMATION

Polish EXCELLENT

Symmetry EXCELLENT

Fluorescence NONE

Inscription(s) IGI LG638479481

Comments: This Laboratory Grown Diamond was created by Chemical Vapor Deposition (CVD) growth process. Type IIa



Summary table of report details: June 28, 2024, IGI Report No LG638479481, ROUND BRILLIANT, 11.21 - 11.25 X 6.54 MM, 5.00 CARATS, J, SI 1, VERY GOOD, 58.3%, 59%, Medium To Slightly Thick (Faceted), None, EXCELLENT, EXCELLENT, NONE, IGI LG638479481. Comments: This Laboratory Grown Diamond was created by Chemical Vapor Deposition (CVD) growth process. Type IIa