



ELECTRONIC COPY

LG638479667 Report verification at igi.org



July 1, 2024 IGI Report Number LG638479667 Description LABORATORY GROWN DIAMOND Shape and Cutting Style CUT CORNERED SQUARE MODIFIED BRILLIANT Measurements 9.53 X 9.25 X 6.01 MM GRADING RESULTS Carat Weight 5.13 CARATS Color Grade E Clarity Grade VVS 2

LABORATORY GROWN DIAMOND REPORT

July 1, 2024 IGI Report Number LG638479667 Description LABORATORY GROWN DIAMOND Shape and Cutting Style CUT CORNERED SQUARE MODIFIED BRILLIANT Measurements 9.53 X 9.25 X 6.01 MM

GRADING RESULTS

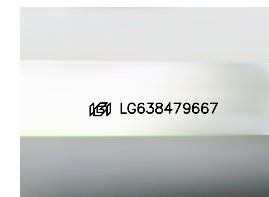
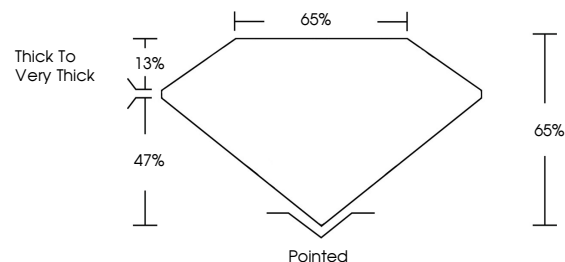
Carat Weight 5.13 CARATS Color Grade E Clarity Grade VVS 2

ADDITIONAL GRADING INFORMATION

Polish EXCELLENT Symmetry EXCELLENT Fluorescence NONE Inscription(s) LG638479667

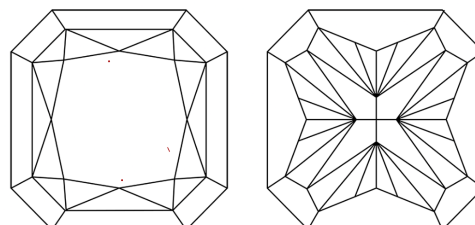
Comments: This Laboratory Grown Diamond was created by Chemical Vapor Deposition (CVD) growth process. Type IIa

PROPORTIONS



Sample Image Used

CLARITY CHARACTERISTICS



KEY TO SYMBOLS

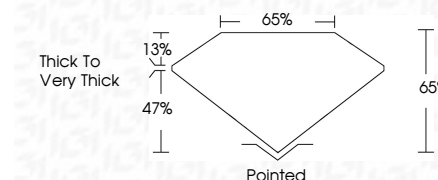
Red symbols indicate internal characteristics. Green symbols indicate external characteristics.

COLOR

D E F G H I J Faint Very Light Light

CLARITY

Table with columns for clarity grades: IF, VS 1-2, VS 1-2, SI 1-2, I 1-3. Rows for Internally Flawless, Very Very Slightly Included, Very Slightly Included, Slightly Included, Included.



ADDITIONAL GRADING INFORMATION

Polish EXCELLENT Symmetry EXCELLENT Fluorescence NONE Inscription(s) LG638479667 Comments: This Laboratory Grown Diamond was created by Chemical Vapor Deposition (CVD) growth process. Type IIa



July 1, 2024 IGI Report No LG638479667 CUT CORNERED SQUARE MODIFIED BRILLIANT 9.53 X 9.25 X 6.01 MM 5.13 CARATS E VVS 2 65% 65% Thick to Very Thick Pointed EXCELLENT EXCELLENT NONE LG638479667

Comments: This Laboratory Grown Diamond was created by Chemical Vapor Deposition (CVD) growth process. Type IIa