



**ELECTRONIC COPY**

LG638490812  
Report verification at igi.org



June 5, 2024

IGI Report Number **LG638490812**

Description **LABORATORY GROWN DIAMOND**

Shape and Cutting Style **ROUND BRILLIANT**

Measurements **8.63 - 8.67 X 5.22 MM**

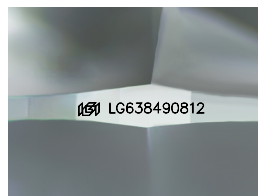
**GRADING RESULTS**

Carat Weight **2.37 CARATS**

Color Grade **D**

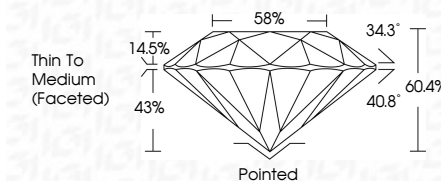
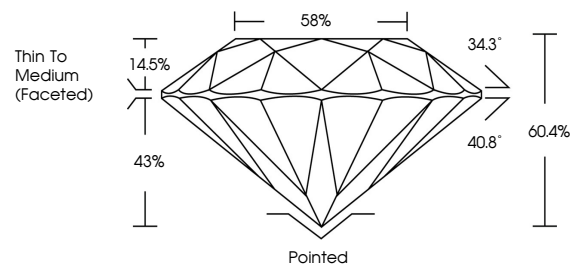
Clarity Grade **VVS 2**

Cut Grade **IDEAL**



Sample Image Used

**PROPORTIONS**



**ADDITIONAL GRADING INFORMATION**

Polish **EXCELLENT**

Symmetry **EXCELLENT**

Fluorescence **NONE**

Inscription(s) **IGI LG638490812**

Comments: HEARTS & ARROWS  
This Laboratory Grown Diamond was created by  
Chemical Vapor Deposition (CVD) growth process.  
Type IIa

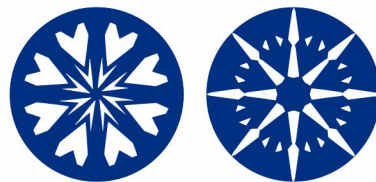
**COLOR**

D E F G H I J Faint Very Light Light

**CLARITY**

IF VS<sup>1-2</sup> VS<sup>1-2</sup> SI<sup>1-2</sup> I<sup>1-3</sup>

Internally Flawless Very Very Slightly Included Very Slightly Included Slightly Included Included



www.igi.org



**IGI**

June 5, 2024	IGI Report No LG638490812	2.37 CARATS	D
ROUND BRILLIANT	8.63 - 8.67 X 5.22 MM	VVS 2	IDEAL
Carat Weight	Color Grade	Depth	60.4%
Clarity Grade	Cut Grade	Table	58%
Color Grade	Cut Grade	Girdle	Thin To Medium (Faceted)
Clarity Grade	Cut Grade	Culet	Pointed
Depth	Cut Grade	Polish	EXCELLENT
Table	Cut Grade	Symmetry	EXCELLENT
Girdle	Cut Grade	Fluorescence	NONE
Culet	Cut Grade	Inscription(s)	IGI LG638490812

Comments: HEARTS & ARROWS  
This Laboratory Grown Diamond was  
created by Chemical Vapor Deposition  
(CVD) growth process.  
Type IIa