



ELECTRONIC COPY

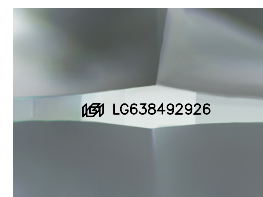
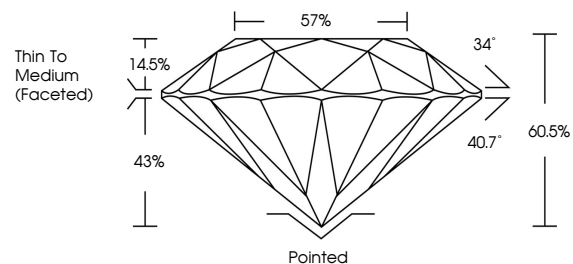
LG638492926
Report verification at igi.org



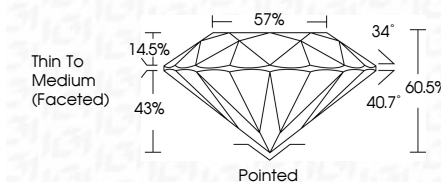
June 5, 2024
IGI Report Number **LG638492926**
Description **LABORATORY GROWN DIAMOND**
Shape and Cutting Style **ROUND BRILLIANT**
Measurements **7.93 - 7.97 X 4.81 MM**
GRADING RESULTS
Carat Weight **1.84 CARAT**
Color Grade **D**
Clarity Grade **VS 1**
Cut Grade **IDEAL**

June 5, 2024
IGI Report Number **LG638492926**
Description **LABORATORY GROWN DIAMOND**
Shape and Cutting Style **ROUND BRILLIANT**
Measurements **7.93 - 7.97 X 4.81 MM**
GRADING RESULTS
Carat Weight **1.84 CARAT**
Color Grade **D**
Clarity Grade **VS 1**
Cut Grade **IDEAL**

PROPORTIONS



Sample Image Used



ADDITIONAL GRADING INFORMATION

Polish **EXCELLENT**
Symmetry **EXCELLENT**
Fluorescence **NONE**
Inscription(s) **IGI LG638492926**

ADDITIONAL GRADING INFORMATION

Polish **EXCELLENT**
Symmetry **EXCELLENT**
Fluorescence **NONE**
Inscription(s) **IGI LG638492926**
Comments: HEARTS & ARROWS
This Laboratory Grown Diamond was created by Chemical Vapor Deposition (CVD) growth process. Type IIa

COLOR

D E F G H I J Faint Very Light Light

CLARITY

IF	VS ¹⁻²	VS ¹⁻²	SI ¹⁻²	I ¹⁻³
Internally Flawless	Very Very Slightly Included	Very Slightly Included	Slightly Included	Included



www.igi.org



IGI

June 5, 2024
IGI Report No. **LG638492926**
ROUND BRILLIANT
7.93 - 7.97 X 4.81 MM
1.84 CARAT
Color Grade **D**
Clarity Grade **VS 1**
Depth **60.5%**
Table **57%**
Girdle **Thin To Medium (Faceted)**
Culet **Pointed**
Polish **EXCELLENT**
Symmetry **EXCELLENT**
Fluorescence **NONE**
Inscriptions(s) **IGI LG638492926**
Comments: HEARTS & ARROWS
This Laboratory Grown Diamond was created by Chemical Vapor Deposition (CVD) growth process. Type IIa