



ELECTRONIC COPY

LG638496882 Report verification at igi.org



June 8, 2024 IGI Report Number LG638496882 Description LABORATORY GROWN DIAMOND Shape and Cutting Style CUT CORNERED RECTANGULAR MODIFIED BRILLIANT Measurements 11.85 X 8.16 X 5.51 MM GRADING RESULTS Carat Weight 4.68 CARATS Color Grade G Clarity Grade VS 1

June 8, 2024 IGI Report Number LG638496882 Description LABORATORY GROWN DIAMOND Shape and Cutting Style CUT CORNERED RECTANGULAR MODIFIED BRILLIANT Measurements 11.85 X 8.16 X 5.51 MM

GRADING RESULTS

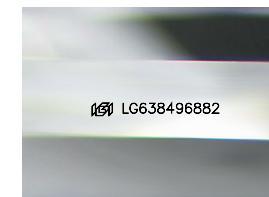
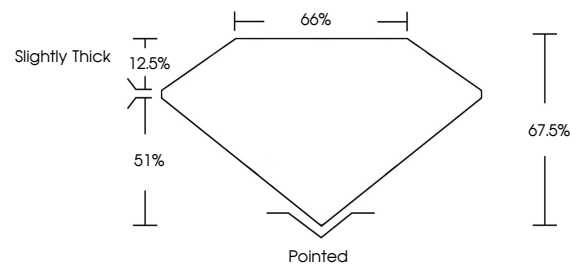
Carat Weight 4.68 CARATS Color Grade G Clarity Grade VS 1

ADDITIONAL GRADING INFORMATION

Polish EXCELLENT Symmetry EXCELLENT Fluorescence NONE Inscription(s) IGI LG638496882

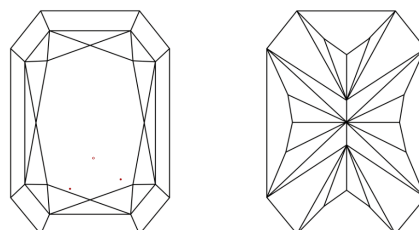
Comments: This Laboratory Grown Diamond was created by Chemical Vapor Deposition (CVD) growth process. Type IIa

PROPORTIONS



Sample Image Used

CLARITY CHARACTERISTICS



KEY TO SYMBOLS

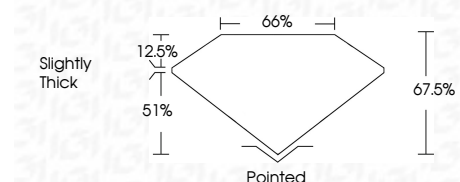
Red symbols indicate internal characteristics. Green symbols indicate external characteristics.

COLOR

D E F G H I J Faint Very Light Light

CLARITY

IF VS 1-2 VS 1-2 SI 1-2 I 1-3 Internally Flawless Very Very Slightly Included Very Slightly Included Slightly Included Included



ADDITIONAL GRADING INFORMATION

Polish EXCELLENT Symmetry EXCELLENT Fluorescence NONE Inscription(s) IGI LG638496882 Comments: This Laboratory Grown Diamond was created by Chemical Vapor Deposition (CVD) growth process. Type IIa



IGI



June 8, 2024 IGI Report No LG638496882 CUT CORNERED RECT. MODIFIED BRILLIANT 11.85 X 8.16 X 5.51 MM 4.68 CARATS G VS 1 67.0% 65% Slightly Thick Pointed EXCELLENT EXCELLENT NONE NONE IGI LG638496882 Comments: This Laboratory Grown Diamond was created by Chemical Vapor Deposition (CVD) growth process. Type IIa