

ELECTRONIC COPY

LABORATORY GROWN DIAMOND REPORT

June 8, 2024	
IGI Report Number	LG638496937
Description	LABORATORY GROWN DIAMOND
Shape and Cutting Style	CUT CORNERED RECTANGULAR MODIFIED BRILLIANT
Measurements	10.16 X 7.09 X 4.79 MM

GRADING RESULTS

Carat Weight	3.03 CARATS
Color Grade	H
Clarity Grade	VS 1

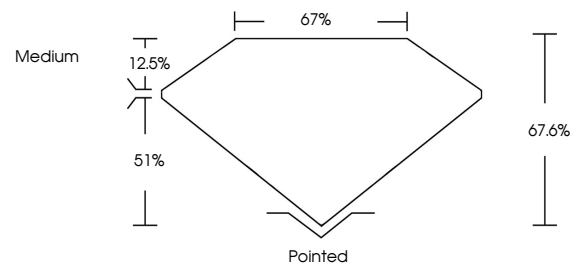
ADDITIONAL GRADING INFORMATION

Polish	EXCELLENT
Symmetry	EXCELLENT
Fluorescence	NONE
Inscription(s)	 LG638496937

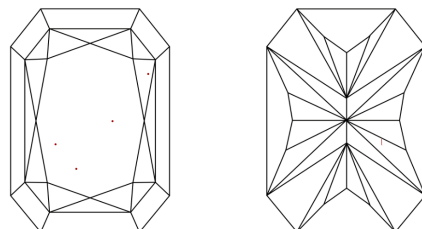
Comments: This Laboratory Grown Diamond was created by Chemical Vapor Deposition (CVD) growth process.
Type IIa

LG638496937
Report verification at igi.org

PROPORTIONS

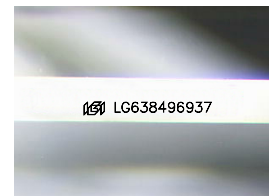


CLARITY CHARACTERISTICS



KEY TO SYMBOLS

Red symbols indicate internal characteristics.
Green symbols indicate external characteristics.



Sample Image Used

COLOR

D E F G H I J Faint Very Light Light

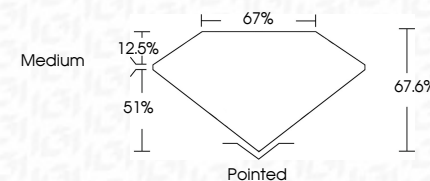
CLARITY

IF	VVS ^{1,2}	VS ^{1,2}	SI ^{1,2}	I ^{1,3}
Internally Flawless	Very Very Slightly Included	Very Slightly Included	Slightly Included	Included

LABORATORY GROWN DIAMOND REPORT



June 8, 2024	
IGI Report Number	LG638496937
Description	LABORATORY GROWN DIAMOND
Shape and Cutting Style	CUT CORNERED RECTANGULAR MODIFIED BRILLIANT
Measurements	10.16 X 7.09 X 4.79 MM
GRADING RESULTS	
Carat Weight	3.03 CARATS
Color Grade	H
Clarity Grade	VS 1



ADDITIONAL GRADING INFORMATION

Polish	EXCELLENT
Symmetry	EXCELLENT
Fluorescence	NONE
Inscription(s)	 LG638496937
<p>Comments: This Laboratory Grown Diamond was created by Chemical Vapor Deposition (CVD) growth process.</p> <p>Type IIa</p>	



© IGI 2020, International Gemological Institute

FD - 10 20

June 8, 2024	IG Report No. LG583496957	3.03 CARATS	VS 1	Polished	Comments: This is a Very Good Diamond was created by Chemical Vapor Deposition (CVD) growth process. Type IIa
GI CORNEDED RECT. MODIFIED BRILLIANT			67 %	EXCELLENT	
			67 %	EXCELLENT	
			Medium	NONE	
				#68 LG583496957	
10.16 X 7.09 X 4.79 MM					
Color Grade	Carat Weight	Clarity Grade	Depth	Culet	
			Table	Booth	
			Girdle	Symmetry	
				Fluorescence	
				Inscriptions(s)	