



ELECTRONIC COPY

LG639401646
Report verification at igi.org



July 25, 2024

IGI Report Number **LG639401646**

Description **LABORATORY GROWN DIAMOND**

Shape and Cutting Style **ROUND BRILLIANT**

Measurements **5.74 - 5.77 X 3.53 MM**

GRADING RESULTS

Carat Weight **0.72 CARAT**

Color Grade **G**

Clarity Grade **VVS 2**

Cut Grade **IDEAL**

July 25, 2024
IGI Report Number **LG639401646**
Description **LABORATORY GROWN DIAMOND**
Shape and Cutting Style **ROUND BRILLIANT**
Measurements **5.74 - 5.77 X 3.53 MM**

GRADING RESULTS

Carat Weight **0.72 CARAT**

Color Grade **G**

Clarity Grade **VVS 2**

Cut Grade **IDEAL**

ADDITIONAL GRADING INFORMATION

Polish **EXCELLENT**

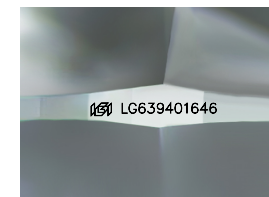
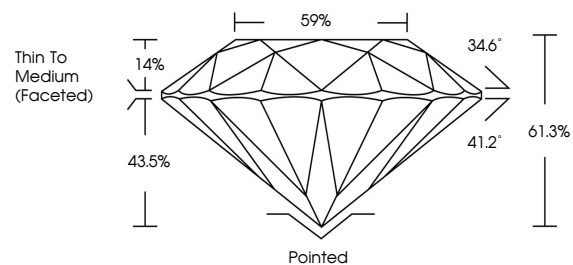
Symmetry **EXCELLENT**

Fluorescence **NONE**

Inscription(s) **IGI LG639401646**

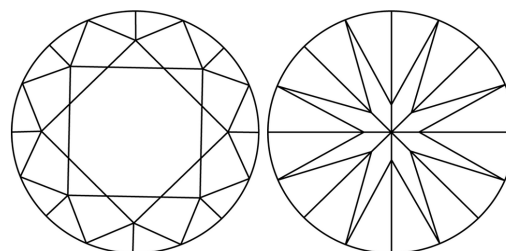
Comments: Plot not shown.
This Laboratory Grown Diamond was created by
Chemical Vapor Deposition (CVD) growth process.
Type IIa

PROPORTIONS



Sample Image Used

CLARITY CHARACTERISTICS



KEY TO SYMBOLS

Red symbols indicate internal characteristics.
Green symbols indicate external characteristics.

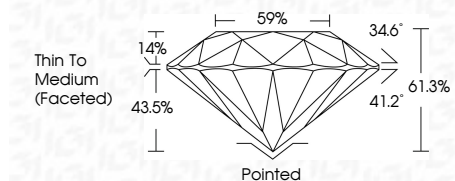
COLOR

D E F G H I J Faint Very Light Light

CLARITY

IF VS¹⁻² VS¹⁻² SI¹⁻² I¹⁻³

Internally Flawless Very Very Slightly Included Very Slightly Included Slightly Included Included



ADDITIONAL GRADING INFORMATION

Polish **EXCELLENT**

Symmetry **EXCELLENT**

Fluorescence **NONE**

Inscription(s) **IGI LG639401646**

Comments: Plot not shown.
This Laboratory Grown Diamond was created by
Chemical Vapor Deposition (CVD) growth process.
Type IIa



IGI



July 25, 2024	IGI Report No LG639401646	0.72 CARAT	G
ROUND BRILLIANT	5.74 - 5.77 X 3.53 MM	VVS 2	IDEAL
Carat Weight	Color Grade	Clarity Grade	Cut Grade
Depth	Table	Girdle	Thin To Medium (Faceted)
Culet	Polish	Symmetry	Fluorescence
Inscription(s)			
Pointed	EXCELLENT	EXCELLENT	NONE
			IGI LG639401646

Comments: Plot not shown. This Laboratory Grown Diamond was created by Chemical Vapor Deposition (CVD) growth process. Type IIa