



ELECTRONIC COPY

LG639401650
Report verification at igi.org



July 25, 2024

IGI Report Number **LG639401650**

Description **LABORATORY GROWN DIAMOND**

Shape and Cutting Style **ROUND BRILLIANT**

Measurements **5.78 - 5.80 X 3.56 MM**

GRADING RESULTS

Carat Weight **0.72 CARAT**

Color Grade **H**

Clarity Grade **VVS 2**

Cut Grade **IDEAL**

July 25, 2024
IGI Report Number **LG639401650**
Description **LABORATORY GROWN DIAMOND**
Shape and Cutting Style **ROUND BRILLIANT**
Measurements **5.78 - 5.80 X 3.56 MM**

GRADING RESULTS

Carat Weight **0.72 CARAT**

Color Grade **H**

Clarity Grade **VVS 2**

Cut Grade **IDEAL**

ADDITIONAL GRADING INFORMATION

Polish **EXCELLENT**

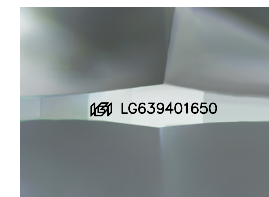
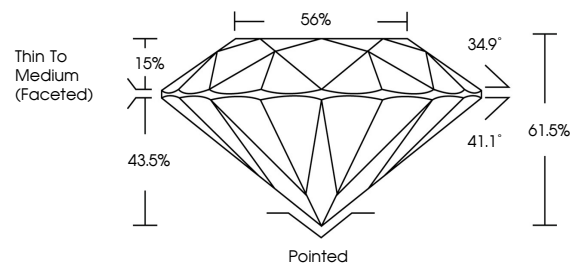
Symmetry **EXCELLENT**

Fluorescence **NONE**

Inscription(s) **LG639401650**

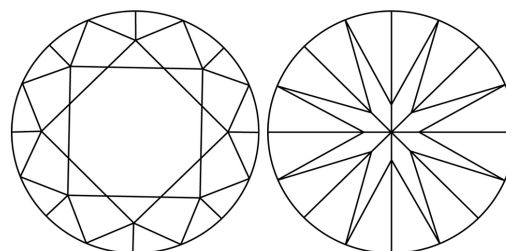
Comments: Plot not shown.
This Laboratory Grown Diamond was created by
Chemical Vapor Deposition (CVD) growth process.
Type IIa

PROPORTIONS



Sample Image Used

CLARITY CHARACTERISTICS



KEY TO SYMBOLS

Red symbols indicate internal characteristics.
Green symbols indicate external characteristics.

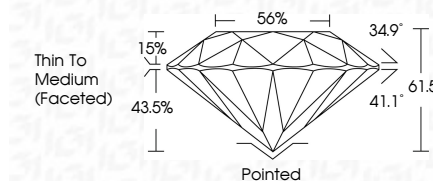
COLOR

D E F G H I J Faint Very Light Light

CLARITY

IF VS¹⁻² VS¹⁻² SI¹⁻² I¹⁻³

Internally Flawless Very Very Slightly Included Very Slightly Included Slightly Included Included



ADDITIONAL GRADING INFORMATION

Polish **EXCELLENT**

Symmetry **EXCELLENT**

Fluorescence **NONE**

Inscription(s) **LG639401650**

Comments: Plot not shown.
This Laboratory Grown Diamond was created by
Chemical Vapor Deposition (CVD) growth process.
Type IIa



IGI



| | | | | | | | | | | | | | | | |
|---------------|---------------------------|-----------------|-----------------------|------------|-------|-------|--------|-------|--------|--------------------------|--------------|----------------|---|------|-------------|
| July 25, 2024 | IGI Report No LG639401650 | ROUND BRILLIANT | 5.78 - 5.80 X 3.56 MM | 0.72 CARAT | H | VVS 2 | IDEAL | 61.5% | 56% | Thin To Medium (Faceted) | Pointed | EXCELLENT | EXCELLENT | NONE | LG639401650 |
| IGI | Carat Weight | Color Grade | Clarity Grade | Cut Grade | Depth | Table | Girdle | Culet | Polish | Symmetry | Fluorescence | Inscription(s) | Comments: Plot not shown. This Laboratory Grown Diamond was created by Chemical Vapor Deposition (CVD) growth process. Type IIa | | |