



ELECTRONIC COPY

LG639401907
Report verification at igi.org



July 26, 2024

IGI Report Number **LG639401907**

Description **LABORATORY GROWN DIAMOND**

Shape and Cutting Style **ROUND BRILLIANT**

Measurements **5.78 - 5.82 X 3.47 MM**

GRADING RESULTS

Carat Weight **0.70 CARAT**

Color Grade **F**

Clarity Grade **VVS 2**

Cut Grade **IDEAL**

July 26, 2024
IGI Report Number **LG639401907**
Description **LABORATORY GROWN DIAMOND**
Shape and Cutting Style **ROUND BRILLIANT**
Measurements **5.78 - 5.82 X 3.47 MM**

GRADING RESULTS

Carat Weight **0.70 CARAT**

Color Grade **F**

Clarity Grade **VVS 2**

Cut Grade **IDEAL**

ADDITIONAL GRADING INFORMATION

Polish **EXCELLENT**

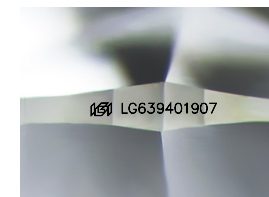
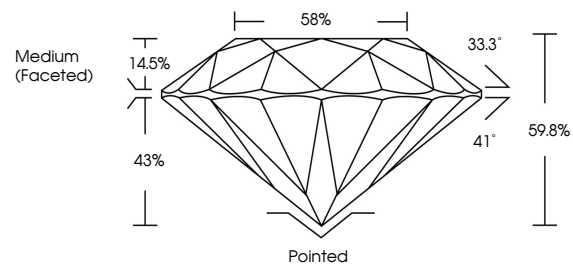
Symmetry **EXCELLENT**

Fluorescence **NONE**

Inscription(s) **IGI LG639401907**

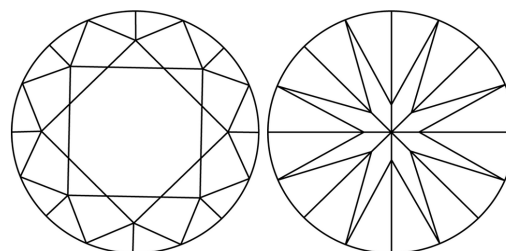
Comments: Plot not shown.
This Laboratory Grown Diamond was created by
Chemical Vapor Deposition (CVD) growth process.
Type IIa

PROPORTIONS



Sample Image Used

CLARITY CHARACTERISTICS



KEY TO SYMBOLS

Red symbols indicate internal characteristics.
Green symbols indicate external characteristics.

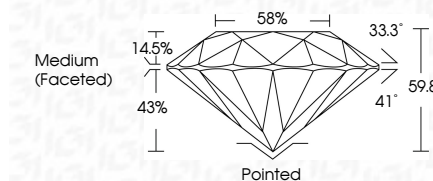
COLOR

D E F G H I J Faint Very Light Light

CLARITY

IF VVS¹⁻² VS¹⁻² SI¹⁻² I¹⁻³

Internally Flawless Very Very Slightly Included Very Slightly Included Slightly Included Included



ADDITIONAL GRADING INFORMATION

Polish **EXCELLENT**

Symmetry **EXCELLENT**

Fluorescence **NONE**

Inscription(s) **IGI LG639401907**

Comments: Plot not shown.
This Laboratory Grown Diamond was created by
Chemical Vapor Deposition (CVD) growth process.
Type IIa



IGI



July 26, 2024	IGI Report No LG639401907	0.70 CARAT	F	Pointed	EXCELLENT	EXCELLENT	NONE	IGI LG639401907
ROUND BRILLIANT	5.78 - 5.82 X 3.47 MM	Carat Weight	VVS 2	Cut Grade	IDEAL	59.8%	Medium (Faceted)	
		Color Grade	VVS 2	Polish	EXCELLENT	Symmetry	EXCELLENT	
		Clarity Grade	IDEAL	Fluorescence	NONE	Inscription(s)	IGI LG639401907	
		Depth	59.8%	Comments: Plot not shown. This Laboratory Grown Diamond was created by Chemical Vapor Deposition (CVD) growth process. Type IIa				
		Table						
		Girdle						