



ELECTRONIC COPY

LG639406680
Report verification at igi.org



June 15, 2024
IGI Report Number LG639406680
Description LABORATORY GROWN DIAMOND
Shape and Cutting Style CUT CORNERED RECTANGULAR MODIFIED BRILLIANT
Measurements 13.41 X 9.48 X 6.50 MM
GRADING RESULTS
Carat Weight 7.22 CARATS
Color Grade G
Clarity Grade VS 1

June 15, 2024
IGI Report Number LG639406680
Description LABORATORY GROWN DIAMOND
Shape and Cutting Style CUT CORNERED RECTANGULAR MODIFIED BRILLIANT
Measurements 13.41 X 9.48 X 6.50 MM

GRADING RESULTS

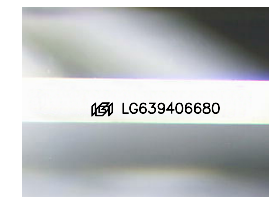
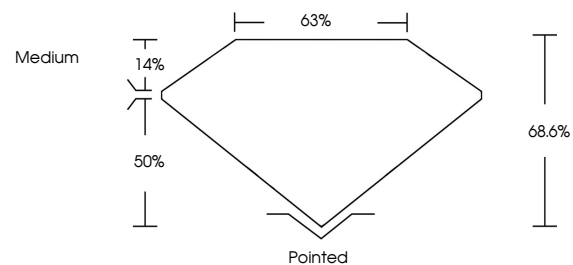
Carat Weight 7.22 CARATS
Color Grade G
Clarity Grade VS 1

ADDITIONAL GRADING INFORMATION

Polish EXCELLENT
Symmetry EXCELLENT
Fluorescence NONE
Inscription(s) IGI LG639406680

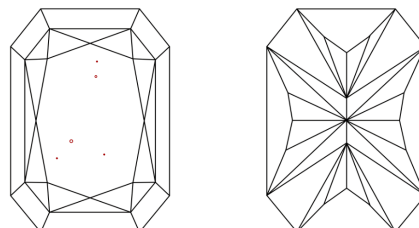
Comments: This Laboratory Grown Diamond was created by Chemical Vapor Deposition (CVD) growth process. Type IIa

PROPORTIONS



Sample Image Used

CLARITY CHARACTERISTICS



KEY TO SYMBOLS

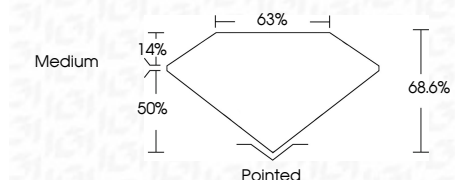
Red symbols indicate internal characteristics.
Green symbols indicate external characteristics.

COLOR

D E F G H I J Faint Very Light Light

CLARITY

IF VS 1-2 VS 1-2 SI 1-2 I 1-3
Internally Flawless Very Very Slightly Included Very Slightly Included Slightly Included Included



ADDITIONAL GRADING INFORMATION

Polish EXCELLENT
Symmetry EXCELLENT
Fluorescence NONE
Inscription(s) IGI LG639406680
Comments: This Laboratory Grown Diamond was created by Chemical Vapor Deposition (CVD) growth process. Type IIa



IGI



June 15, 2024
IGI Report No LG639406680
CUT CORNERED RECT. MODIFIED BRILLIANT
13.41 X 9.48 X 6.50 MM
7.22 CARATS
G
Color Grade
VS 1
68.6%
50%
Medium
Pointed
EXCELLENT
EXCELLENT
NONE
IGI LG639406680

Comments: This Laboratory Grown Diamond was created by Chemical Vapor Deposition (CVD) growth process. Type IIa