



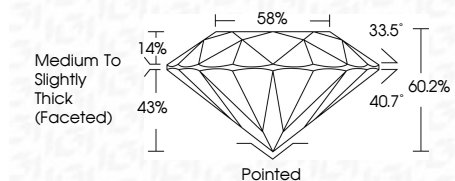
ELECTRONIC COPY

LG639407489 Report verification at igi.org



June 20, 2024 IGI Report Number LG639407489 Description LABORATORY GROWN DIAMOND Shape and Cutting Style ROUND BRILLIANT Measurements 7.54 - 7.57 X 4.55 MM

GRADING RESULTS Carat Weight 1.59 CARAT Color Grade E Clarity Grade VS 1 Cut Grade IDEAL



ADDITIONAL GRADING INFORMATION Polish EXCELLENT Symmetry EXCELLENT Fluorescence NONE Inscription(s) IGI LG639407489 Comments: This Laboratory Grown Diamond was created by Chemical Vapor Deposition (CVD) growth process. Type IIa



June 20, 2024 IGI Report No LG639407489 ROUND BRILLIANT 7.54 - 7.57 X 4.55 MM 1.59 CARAT E VS 1 IDEAL 60.2% 58% Medium To Slightly Thick (Faceted) Pointed EXCELLENT EXCELLENT NONE IGI LG639407489

LABORATORY GROWN DIAMOND REPORT

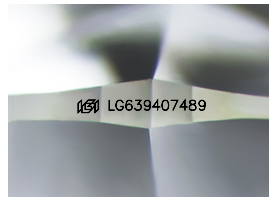
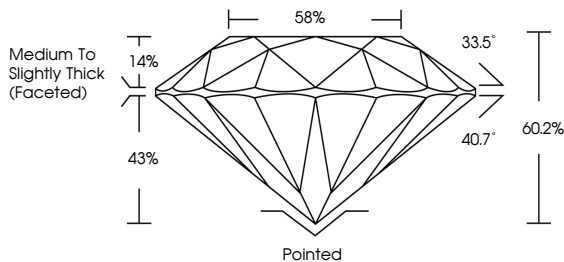
June 20, 2024 IGI Report Number LG639407489 Description LABORATORY GROWN DIAMOND Shape and Cutting Style ROUND BRILLIANT Measurements 7.54 - 7.57 X 4.55 MM

GRADING RESULTS Carat Weight 1.59 CARAT Color Grade E Clarity Grade VS 1 Cut Grade IDEAL

ADDITIONAL GRADING INFORMATION Polish EXCELLENT Symmetry EXCELLENT Fluorescence NONE Inscription(s) IGI LG639407489

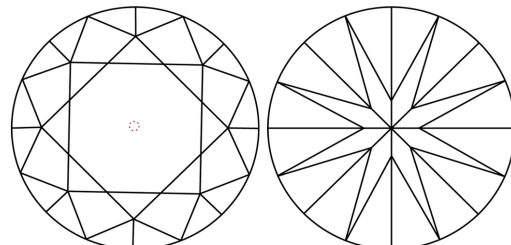
Comments: This Laboratory Grown Diamond was created by Chemical Vapor Deposition (CVD) growth process. Type IIa

PROPORTIONS



Sample Image Used

CLARITY CHARACTERISTICS



KEY TO SYMBOLS Red symbols indicate internal characteristics. Green symbols indicate external characteristics.

Table with columns D, E, F, G, H, I, J, Faint, Very Light, Light

Table with columns IF, VS 1-2, VS 1-2, SI 1-2, I 1-3 and Internally Flawless, Very Very Slightly Included, Very Slightly Included, Slightly Included, Included



Comments: This Laboratory Grown Diamond was created by Chemical Vapor Deposition (CVD) growth process. Type IIa