



**ELECTRONIC COPY**

LG639416082  
Report verification at igi.org



June 26, 2024

IGI Report Number **LG639416082**

Description **LABORATORY GROWN DIAMOND**

Shape and Cutting Style **EMERALD CUT**

Measurements **8.45 X 5.95 X 4.05 MM**

**GRADING RESULTS**

Carat Weight **2.06 CARATS**

Color Grade **FANCY LIGHT PINK**

Clarity Grade **VS 2**

June 26, 2024  
IGI Report Number **LG639416082**  
Description **LABORATORY GROWN DIAMOND**  
Shape and Cutting Style **EMERALD CUT**  
Measurements **8.45 X 5.95 X 4.05 MM**

**GRADING RESULTS**

Carat Weight **2.06 CARATS**

Color Grade **FANCY LIGHT PINK**

Clarity Grade **VS 2**

**ADDITIONAL GRADING INFORMATION**

Polish **EXCELLENT**

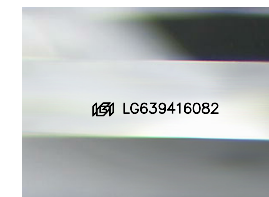
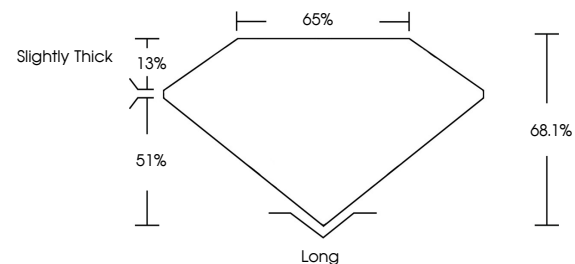
Symmetry **EXCELLENT**

Fluorescence **SLIGHT**

Inscription(s) **LG639416082**

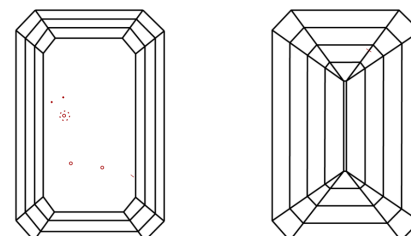
Comments: This Laboratory Grown Diamond was created by Chemical Vapor Deposition (CVD) growth process. Indications of post-growth treatment.

**PROPORTIONS**



Sample Image Used

**CLARITY CHARACTERISTICS**



**KEY TO SYMBOLS**

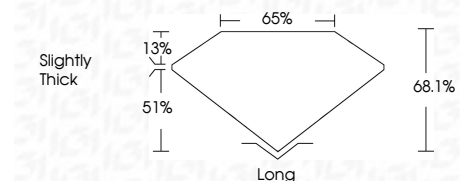
Red symbols indicate internal characteristics.  
Green symbols indicate external characteristics.

**COLOR**

D E F G H I J Faint Very Light Light

**CLARITY**

IF	VS <sup>1-2</sup>	VS <sup>1-2</sup>	SI <sup>1-2</sup>	I <sup>1-3</sup>
Internally Flawless	Very Very Slightly Included	Very Slightly Included	Slightly Included	Included



**ADDITIONAL GRADING INFORMATION**

Polish **EXCELLENT**

Symmetry **EXCELLENT**

Fluorescence **SLIGHT**

Inscription(s) **LG639416082**

Comments: This Laboratory Grown Diamond was created by Chemical Vapor Deposition (CVD) growth process. Indications of post-growth treatment.



**IGI**



June 26, 2024  
IGI Report No. **LG639416082**  
**EMERALD CUT**

**2.06 CARATS**  
Carat Weight  
**FANCY LIGHT PINK**  
Color Grade  
**VS 2**  
Clarity Grade  
**68.1%**  
Table  
**65%**  
Girdle  
**Slightly Thick**

**Long**  
Culet  
**EXCELLENT**  
Polish  
**EXCELLENT**  
Symmetry  
**EXCELLENT**  
Fluorescence  
**SLIGHT**  
Inscription(s)  
 **LG639416082**

Comments: This Laboratory Grown Diamond was created by Chemical Vapor Deposition (CVD) growth process. Indications of post-growth treatment.