



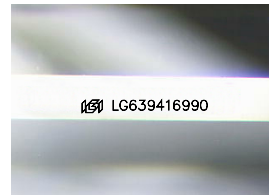
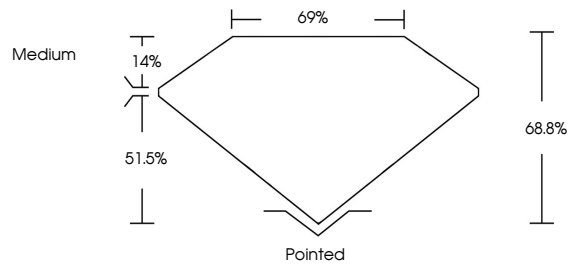
**INTERNATIONAL  
GEMOLOGICAL  
INSTITUTE**

**ELECTRONIC COPY**

## LABORATORY GROWN DIAMOND REPORT

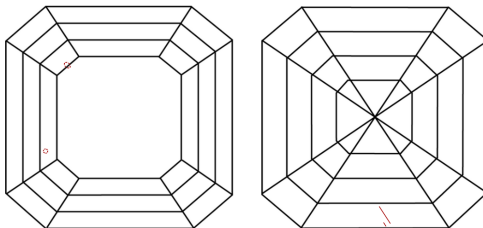
LG639416990  
Report verification at [igi.org](https://igi.org)

## PROPORTIONS



Sample Image Used

## CLARITY CHARACTERISTICS



## KEY TO SYMBOLS

Red symbols indicate internal characteristics.  
Green symbols indicate external characteristics.

**COLOR**

D E F G H I J Faint Very Light Light

## CLARITY

| IF                  | WVS <sup>1-2</sup>          | VS <sup>1-2</sup>      | SI <sup>1-2</sup> | I <sup>1-3</sup> |
|---------------------|-----------------------------|------------------------|-------------------|------------------|
| Internally Flawless | Very Very Slightly Included | Very Slightly Included | Slightly Included | Included         |

## LABORATORY GROWN DIAMOND REPORT



June 18, 2024

IGI Report Number **LG639416990**

|             |                          |
|-------------|--------------------------|
| Description | LABORATORY GROWN DIAMOND |
|-------------|--------------------------|

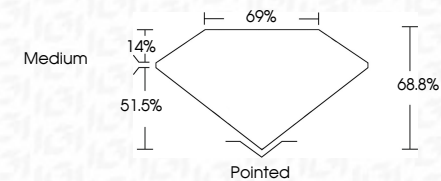
Shape and Cutting Style **SQUARE EMERALD CUT**

Measurements **5.54 X 5.38 X 3.70 MM**

## GRADING RESULTS

Carat Weight **1.00 CARAT**

Color Grade **E**

Clarity Grade **SI 1**

### ADDITIONAL GRADING INFORMATION

Polish **EXCELLENT**Symmetry **EXCELLENT**Fluorescence **NONE**Inscription(s)  LG639416990

Comments: This Laboratory Grown Diamond was created by Chemical Vapor Deposition (CVD) growth process.  
Type IIa



IG

June 18, 2024  
IGI Report No LG639416990  
SQUARE EMERALD CUT

|                            |                 |
|----------------------------|-----------------|
| IGI Report No. IGA99416990 | 1.00 CARAT      |
| SQUARE EMERALD CUT         |                 |
| 5.64 X 5.38 X 3.70 MM      |                 |
| Carat Weight               | S I             |
| Color Grade                | 68.8%           |
| Clarity Grade              | 69%             |
| Depth                      | Medium          |
| Table                      |                 |
| Girdle                     |                 |
| Culet                      | Polished        |
| Polish                     | EXCELLENT       |
| Symmetry                   | EXCELLENT       |
| Fluorescence               | NONE            |
| Inclusions(1)              | see ICA99416990 |

**Comments:**  
This Laboratory Grown Diamond was created by Chemical Vapor Deposition (CVD) growth process.  
Type IIa

© IGI 2020, International Gemological Institute

FD - 10 20



THIS DOCUMENT WAS PRODUCED WITH THE FOLLOWING SECURITY MEASURES: SPECIAL DOCUMENT PAPER, INK SCREENS, WATERMARK, BACKGROUND DESIGNS, HOLOGRAM AND OTHER SECURITY FEATURES NOT LISTED AND DO EXCEED DOCUMENT SECURITY INDUSTRY GUIDELINES

**www.igi.org**