



ELECTRONIC COPY

LG639417045
Report verification at igi.org



June 19, 2024
IGI Report Number **LG639417045**
Description **LABORATORY GROWN DIAMOND**
Shape and Cutting Style **ROUND BRILLIANT**
Measurements **10.95 - 11.02 X 6.73 MM**
GRADING RESULTS
Carat Weight **5.06 CARATS**
Color Grade **G**
Clarity Grade **VVS 2**
Cut Grade **IDEAL**

June 19, 2024
IGI Report Number **LG639417045**
Description **LABORATORY GROWN DIAMOND**
Shape and Cutting Style **ROUND BRILLIANT**
Measurements **10.95 - 11.02 X 6.73 MM**

GRADING RESULTS

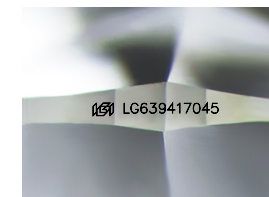
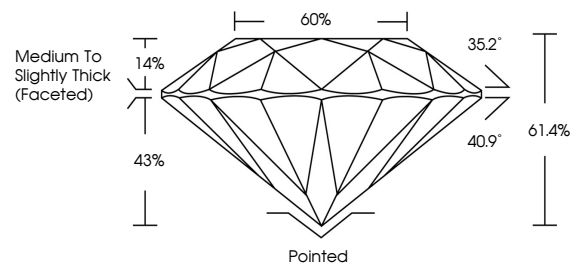
Carat Weight **5.06 CARATS**
Color Grade **G**
Clarity Grade **VVS 2**
Cut Grade **IDEAL**

ADDITIONAL GRADING INFORMATION

Polish **EXCELLENT**
Symmetry **EXCELLENT**
Fluorescence **NONE**
Inscription(s) **IGI LG639417045**

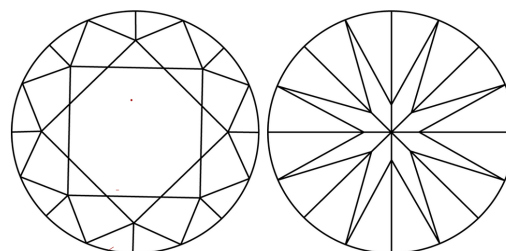
Comments: This Laboratory Grown Diamond was created by Chemical Vapor Deposition (CVD) growth process.
Type IIa

PROPORTIONS



Sample Image Used

CLARITY CHARACTERISTICS



KEY TO SYMBOLS

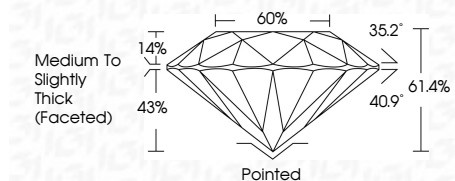
Red symbols indicate internal characteristics.
Green symbols indicate external characteristics.

COLOR

D E F G H I J Faint Very Light Light

CLARITY

IF	VVS ¹⁻²	VS ¹⁻²	SI ¹⁻²	I ¹⁻³
Internally Flawless	Very Very Slightly Included	Very Slightly Included	Slightly Included	Included



ADDITIONAL GRADING INFORMATION

Polish **EXCELLENT**
Symmetry **EXCELLENT**
Fluorescence **NONE**
Inscription(s) **IGI LG639417045**
Comments: This Laboratory Grown Diamond was created by Chemical Vapor Deposition (CVD) growth process.
Type IIa



June 19, 2024
IGI Report No LG639417045
ROUND BRILLIANT
10.95 - 11.02 X 6.73 MM
5.06 CARATS
G
VVS 2
IDEAL
61.4%
60%
Medium To Slightly Thick (Faceted)
Pointed
EXCELLENT
EXCELLENT
NONE
IGI LG639417045
Comments: This Laboratory Grown Diamond was created by Chemical Vapor Deposition (CVD) growth process.
Type IIa