



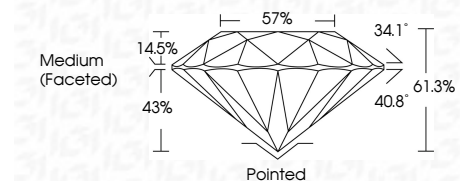
ELECTRONIC COPY

LG639427747 Report verification at igi.org



June 22, 2024 IGI Report Number LG639427747 Description LABORATORY GROWN DIAMOND Shape and Cutting Style ROUND BRILLIANT Measurements 9.55 - 9.58 X 5.86 MM

GRADING RESULTS Carat Weight 3.28 CARATS Color Grade F Clarity Grade SI 2 Cut Grade IDEAL



ADDITIONAL GRADING INFORMATION Polish EXCELLENT Symmetry EXCELLENT Fluorescence NONE Inscription(s) IGI LG639427747 Comments: This Laboratory Grown Diamond was created by Chemical Vapor Deposition (CVD) growth process. Type IIa



June 22, 2024 IGI Report No LG639427747 ROUND BRILLIANT 9.55 - 9.58 X 5.86 MM 3.28 CARATS F SI 2 IDEAL 61.3% 57% Medium (Faceted) Pointed EXCELLENT EXCELLENT NONE NONE IGI LG639427747 Comments: This Laboratory Grown Diamond was created by Chemical Vapor Deposition (CVD) growth process. Type IIa

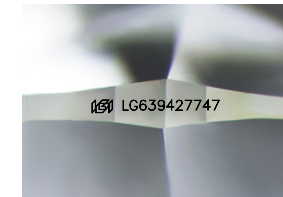
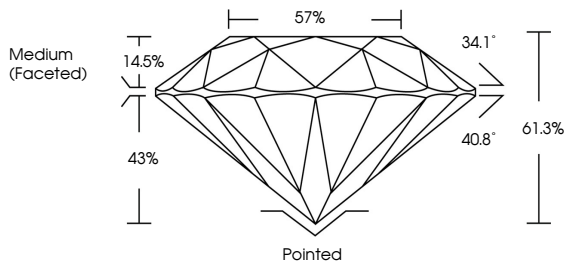
June 22, 2024 IGI Report Number LG639427747 Description LABORATORY GROWN DIAMOND Shape and Cutting Style ROUND BRILLIANT Measurements 9.55 - 9.58 X 5.86 MM

GRADING RESULTS Carat Weight 3.28 CARATS Color Grade F Clarity Grade SI 2 Cut Grade IDEAL

ADDITIONAL GRADING INFORMATION Polish EXCELLENT Symmetry EXCELLENT Fluorescence NONE Inscription(s) IGI LG639427747

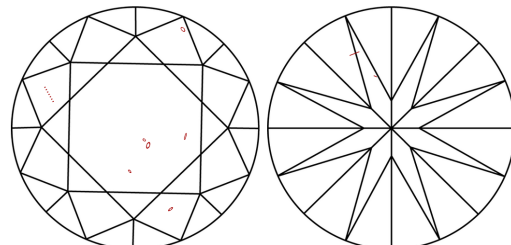
Comments: This Laboratory Grown Diamond was created by Chemical Vapor Deposition (CVD) growth process. Type IIa

PROPORTIONS



Sample Image Used

CLARITY CHARACTERISTICS



KEY TO SYMBOLS Red symbols indicate internal characteristics. Green symbols indicate external characteristics.

COLOR

Table with columns D, E, F, G, H, I, J and rows Faint, Very Light, Light

CLARITY

Table with columns IF, VS 1-2, VS 1-2, SI 1-2, I 1-3 and rows Internally Flawless, Very Very Slightly Included, Very Slightly Included, Slightly Included, Included

