



ELECTRONIC COPY

LG639428543
Report verification at igi.org



June 25, 2024

IGI Report Number **LG639428543**

Description **LABORATORY GROWN DIAMOND**

Shape and Cutting Style **ROUND BRILLIANT**

Measurements **6.56 - 6.62 X 4.04 MM**

GRADING RESULTS

Carat Weight **1.10 CARAT**

Color Grade **D**

Clarity Grade **VS 1**

Cut Grade **IDEAL**

June 25, 2024
IGI Report Number **LG639428543**
Description **LABORATORY GROWN DIAMOND**
Shape and Cutting Style **ROUND BRILLIANT**
Measurements **6.56 - 6.62 X 4.04 MM**

GRADING RESULTS

Carat Weight **1.10 CARAT**

Color Grade **D**

Clarity Grade **VS 1**

Cut Grade **IDEAL**

ADDITIONAL GRADING INFORMATION

Polish **EXCELLENT**

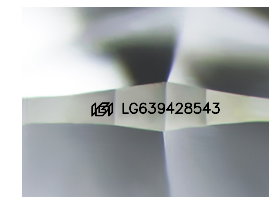
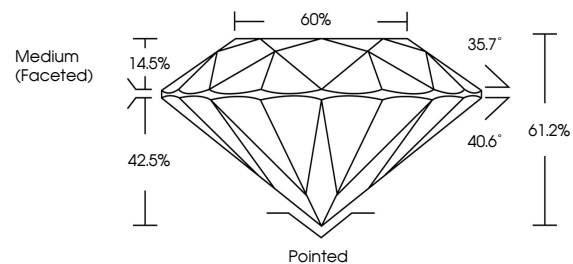
Symmetry **EXCELLENT**

Fluorescence **NONE**

Inscription(s) **LG639428543**

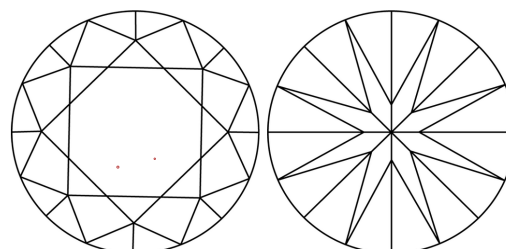
Comments: This Laboratory Grown Diamond was created by Chemical Vapor Deposition (CVD) growth process.
Type IIa

PROPORTIONS



Sample Image Used

CLARITY CHARACTERISTICS



KEY TO SYMBOLS

Red symbols indicate internal characteristics.
Green symbols indicate external characteristics.

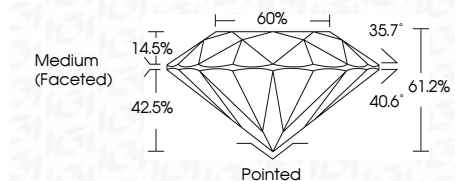
COLOR

D E F G H I J Faint Very Light Light

CLARITY

IF VS¹⁻² VS¹⁻² SI¹⁻² I¹⁻³

Internally Flawless Very Very Slightly Included Very Slightly Included Slightly Included Included



ADDITIONAL GRADING INFORMATION

Polish **EXCELLENT**

Symmetry **EXCELLENT**

Fluorescence **NONE**

Inscription(s) **LG639428543**

Comments: This Laboratory Grown Diamond was created by Chemical Vapor Deposition (CVD) growth process.
Type IIa



IGI



June 25, 2024	IGI Report No LG639428543	1.10 CARAT	D	Pointed	EXCELLENT	EXCELLENT	NONE	LG639428543
ROUND BRILLIANT	6.56 - 6.62 X 4.04 MM	Color Grade	VS 1	IDEAL	61.2%	60%	Medium (Faceted)	
		Clarity Grade	VS 1	IDEAL	61.2%	60%	Medium (Faceted)	
		Cut Grade	IDEAL	61.2%	60%	60%	Medium (Faceted)	
		Table						
		Grille						
		Culet						
		Polish	EXCELLENT	EXCELLENT	NONE			
		Symmetry	EXCELLENT	EXCELLENT	NONE			
		Fluorescence	NONE					
		Inscription(s)						
		Comments:	This Laboratory Grown Diamond was created by Chemical Vapor Deposition (CVD) growth process. Type IIa					