



ELECTRONIC COPY

LABORATORY GROWN DIAMOND REPORT

June 18, 2024
IGI Report Number LG639428875
Description LABORATORY GROWN DIAMOND
Shape and Cutting Style SQUARE EMERALD CUT
Measurements 7.46 X 7.36 X 4.87 MM

GRADING RESULTS

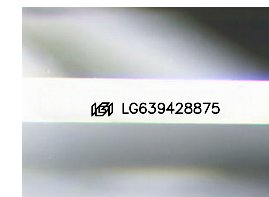
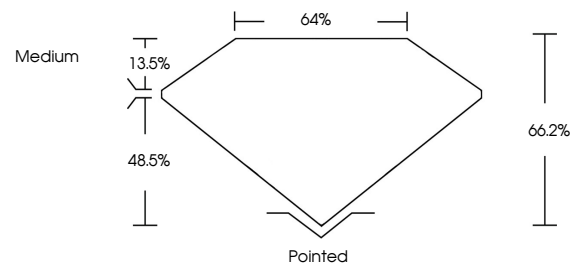
Carat Weight 2.45 CARATS
Color Grade F
Clarity Grade VVS 2

ADDITIONAL GRADING INFORMATION

Polish EXCELLENT
Symmetry EXCELLENT
Fluorescence NONE
Inscription(s) IGI LG639428875

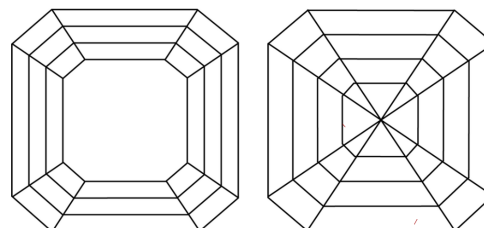
Comments: This Laboratory Grown Diamond was created by Chemical Vapor Deposition (CVD) growth process.
Type IIa

PROPORTIONS



Sample Image Used

CLARITY CHARACTERISTICS



KEY TO SYMBOLS

Red symbols indicate internal characteristics.
Green symbols indicate external characteristics.

COLOR

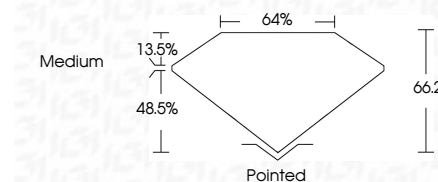
D E F G H I J Faint Very Light Light

CLARITY

IF VS¹⁻² VS¹⁻² SI¹⁻² I¹⁻³
Internally Flawless Very Very Slightly Included Very Slightly Included Slightly Included Included



June 18, 2024
IGI Report Number LG639428875
Description LABORATORY GROWN DIAMOND
Shape and Cutting Style SQUARE EMERALD CUT
Measurements 7.46 X 7.36 X 4.87 MM
GRADING RESULTS
Carat Weight 2.45 CARATS
Color Grade F
Clarity Grade VVS 2



ADDITIONAL GRADING INFORMATION

Polish EXCELLENT
Symmetry EXCELLENT
Fluorescence NONE
Inscription(s) IGI LG639428875
Comments: This Laboratory Grown Diamond was created by Chemical Vapor Deposition (CVD) growth process.
Type IIa



IGI



June 18, 2024
IGI Report No LG639428875
SQUARE EMERALD CUT
2.45 CARATS
Color Grade F
Clarity Grade VVS 2
Depth 48.5%
Table 13.5%
Girdle Medium
Culet Pointed
Polish EXCELLENT
Symmetry EXCELLENT
Fluorescence NONE
Inscription(s) IGI LG639428875

Comments: This Laboratory Grown Diamond was created by Chemical Vapor Deposition (CVD) growth process.
Type IIa