



ELECTRONIC COPY

LG639433427
Report verification at igi.org



June 25, 2024
IGI Report Number **LG639433427**
Description **LABORATORY GROWN DIAMOND**
Shape and Cutting Style **CUSHION MODIFIED BRILLIANT**
Measurements **8.09 X 6.69 X 4.43 MM**
GRADING RESULTS
Carat Weight **2.15 CARATS**
Color Grade **FANCY VIVID YELLOW**
Clarity Grade **VVS 2**

LABORATORY GROWN DIAMOND REPORT

June 25, 2024
IGI Report Number **LG639433427**
Description **LABORATORY GROWN DIAMOND**
Shape and Cutting Style **CUSHION MODIFIED BRILLIANT**
Measurements **8.09 X 6.69 X 4.43 MM**

GRADING RESULTS

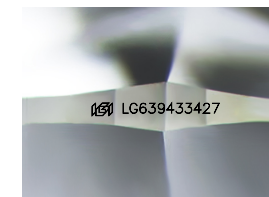
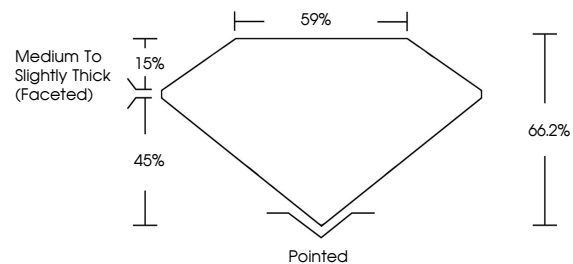
Carat Weight **2.15 CARATS**
Color Grade **FANCY VIVID YELLOW**
Clarity Grade **VVS 2**

ADDITIONAL GRADING INFORMATION

Polish **EXCELLENT**
Symmetry **EXCELLENT**
Fluorescence **NONE**
Inscription(s) **IGI LG639433427**

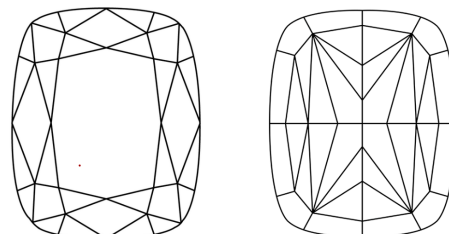
Comments: This Laboratory Grown Diamond was created by Chemical Vapor Deposition (CVD) growth process.

PROPORTIONS



Sample Image Used

CLARITY CHARACTERISTICS



KEY TO SYMBOLS

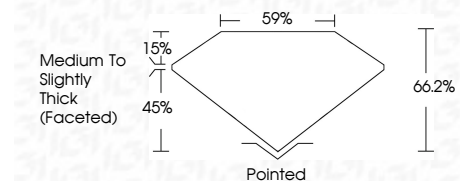
Red symbols indicate internal characteristics.
Green symbols indicate external characteristics.

COLOR

D E F G H I J Faint Very Light Light

CLARITY

IF	VVS ¹⁻²	VS ¹⁻²	SI ¹⁻²	I ¹⁻³
Internally Flawless	Very Very Slightly Included	Very Slightly Included	Slightly Included	Included



ADDITIONAL GRADING INFORMATION

Polish **EXCELLENT**
Symmetry **EXCELLENT**
Fluorescence **NONE**
Inscription(s) **IGI LG639433427**
Comments: This Laboratory Grown Diamond was created by Chemical Vapor Deposition (CVD) growth process.



June 25, 2024
IGI Report No **LG639433427**
CUSHION MODIFIED BRILLIANT
8.09 X 6.69 X 4.43 MM
Carat Weight **2.15 CARATS**
Color Grade **FANCY VIVID YELLOW**
Clarity Grade **VVS 2**
Depth **66.2%**
Table **59%**
Girdle **Medium to Slightly Thick (Faceted)**
Culet **Pointed**
Polish **EXCELLENT**
Symmetry **EXCELLENT**
Fluorescence **NONE**
Inscription(s) **IGI LG639433427**
Comments: This Laboratory Grown Diamond was created by Chemical Vapor Deposition (CVD) growth process.